

A4 HOW TO USE THIS DOCUMENT

OVERVIEW

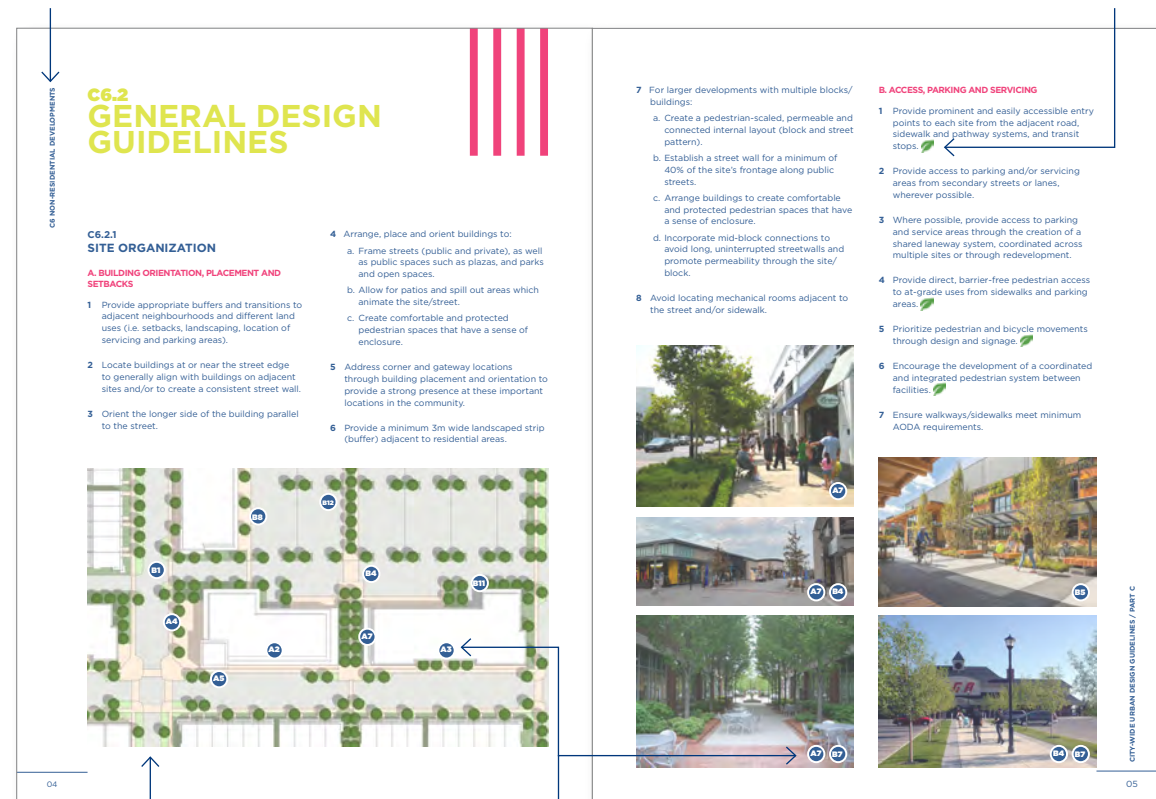
Part B and Part C form the main content of these Guidelines and should be consulted when initiating a development application. The Guidelines are organized to address the various forms of development that may be proposed. The chart on the facing page identifies which sections of the Guidelines may apply, depending on the type or form of development; however, applicability will be confirmed by staff during the pre-consultation stage.

This document is designed to include guidelines and corresponding graphics on the same page or spread to facilitate readability and direct referencing. An example of a spread is shown below.

Sidebars identify the Parts of the Guidelines (A, B, or C) shown at the top left, and the specific Chapters within each Part shown at the bottom right.



Guidelines marked with this leaf symbol align with and support the City's Sustainable New Communities Program (SNCP).



Demonstration plans are intended to illustrate the overall intent of the guidelines, rather than represent detailed development designs.



Precedent images and demonstration plans are linked to specific guidelines through numbered labels. Letters are added only when more than one subsection is referenced on the same page or spread.

TYPE OF DEVELOPMENT

PRECINCT / AREA PLANS

SITE PLANS

PART B: SUSTAINABLE COMMUNITY DESIGN

PART C: SITE ORGANIZATION + BUILT FORM

C2 Common Guidelines (All Building Forms)

RESIDENTIAL

MIXED-USE

NON-RESIDENTIAL

C3 LOW-RISE DEVELOPMENT (1 TO 4 STOREYS) C3.1 General Design Guidelines

OR

OR

+

+

+

+

+

+

+

+

+

+

+

+

+

+

+

+

+

+

+

+

+

+

+

+

+

+

+

+

+

+

+

+

+

+

+

+

+

+

+

+

+

+

+

+

+

+

+

+

+

+

+

+

+

+

+

+

+

+

+

+

+

+

+

+

+

+

+

+

+

+

+

+

+

+

+

+

+

+

+

+

+

+

+

+

+

+

+

+

+

+

+

+

+

+

+

+

+

+

+

+

+

+

+

+

+

+

+

+

+

+

+

+

+

+

+

+

+

+

+

+

+

+

+

+

+

+

+

+

+

+

+

+

+

+

+

+

+

+

+

+

+

+

+

+

+

+

+

+

+

+

+

+

+

+

+

+

+

+

+

+

+

+

+

+

+

+

+

+

+

+

+

+

+

+

+

+

+

+

+

+

+

+

+

+

+

+

+

+

+

+

+

+

+

+

+

+

+

+

+

+

+

+

+

+

+

+

+

+

+

+

+

+

+

+

+

+

+

+

+

+

+

+

+

+

+

+

+

+

+

+

+

+

+

+

+

+

+

+

+

+

+

+

+

+

+

+

+

+

+

+

+

+

+

+

+

+

+

+

+

+

+

+

+

+

+

+

+

+

+

+

+

+

+

+

+

+

+

+

+

+

+

PART B - SUSTAINABLE COMMUNITY DESIGN

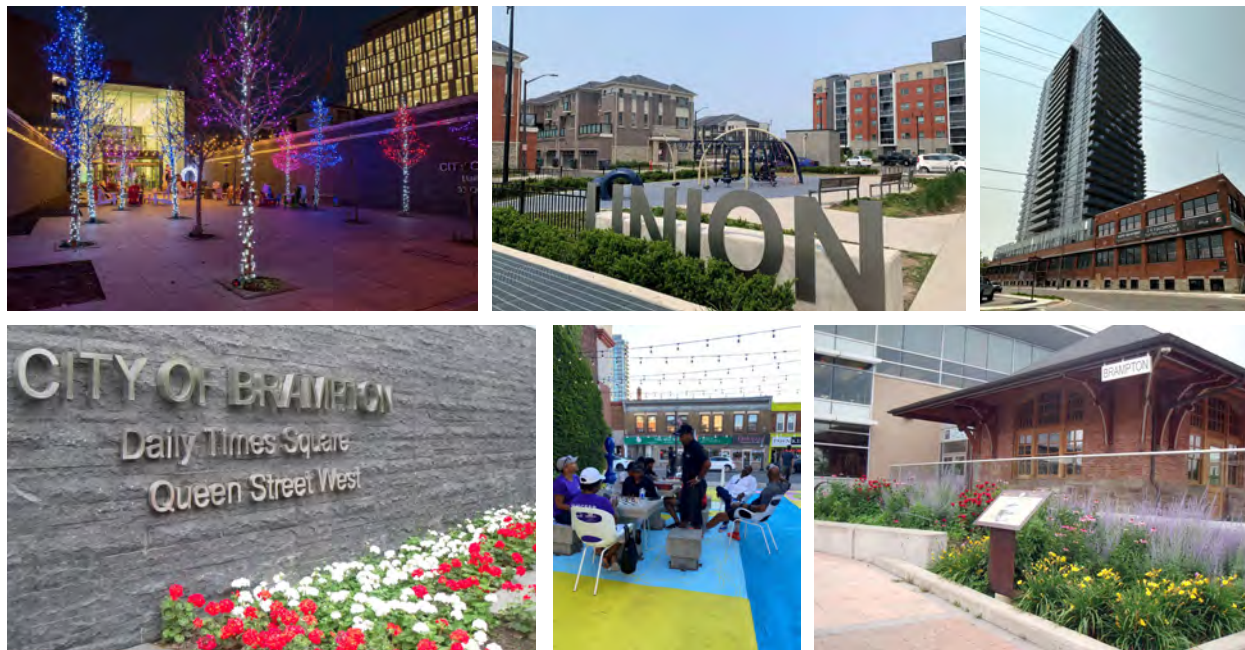
Part B provides direction for Precinct and Area Plan scales of development. It outlines principles of planning and design when arranging the various building blocks referred to in Brampton Plan - namely buildings, streets and blocks, and parks and open space as well as their relationship to the natural system and opportunities for integrating green infrastructure into various aspects of new development.

Part B should be read in conjunction with the Grow Green Environmental Master Plan, and work alongside the SNCP.

PART C - SITE ORGANIZATION AND BUILT FORM

Part C provides direction on low-rise, mid-rise and high-rise forms of development and non-residential forms of development. It covers small and large sites, including the organization of buildings and site elements on these sites.

Of note, Sections 3.3.1, 3.3.2, 3.3.3 and 3.4 address low-rise residential forms and replace the City's Architectural Control Guidelines for Ground-Related Residential Development (ACGGRD). Section 3.3.4 provides new guidelines to address Multiplexes and Section 3.3.5 provides new guidelines to address Additional Residential Units. See Appendix 1 - Guidelines for Detached Additional Residential Units/ Garden Suites.



This page left intentionally blank