



## THE CORPORATION OF THE CITY OF BRAMPTON

# BY-LAW

Number 63-87

To regulate, supervise and govern  
the parking of vehicles on  
municipal parking lots.

The Council of the Corporation of the City of Brampton enacts as follows:

Definitions:

1. For the purposes of this by-law:

"Commissioner" means the Commissioner of Public Works and Building for the City of Brampton, or such person as he may designate to carry out his duties under this by-law.

"Motorcycle" means a self-propelled vehicle having a seat or saddle for the use of the driver and designed to travel on not more than three wheels in contact with the ground, and includes a bicycle with a motor attached and a motor scooter;

"Motor vehicle" includes automobile, motorcycle, and any other vehicle propelled or driven otherwise than by muscular power;

"Park", "parking", "parked", when describing a vehicle, includes that vehicle, whether occupied or not, and whether parked or standing;

"Parking lot" shall mean land where motor vehicles may be parked which has been acquired, established, laid out or improved by the City;

"Parking machine" means an automatic or other mechanical device, with the necessary standard for the same, for the purpose of controlling and regulating the parking of any motor vehicle in or on a parking lot and which, when a coin has been inserted therein and the machine activated, issues a card indicating the date and time of such activating and the duration of the parking in or on the parking lot permitted thereby;

"Parking meter" means an automatic or other mechanical device, with the necessary standard for same, for the purposes of controlling and regulating the parking of any motor vehicle in a parking space and measuring and recording the duration of such parking;

"Parking space" means a portion of the surface of a parking lot normally designated by lines painted or marked on the surface of the parking lot;

"Permit" means a monthly pass to park a motor vehicle within a designated lot for the duration of a month;

"Vehicle" includes motor vehicle, trailer, traction engine, farm tractor, roadbuilding machine and any vehicle drawn, propelled or driven by any kind of power, including muscular power.

Administration And Enforcement

Enforcement of Regulations:

2. This by-law shall be enforced:
  - i) by Police Officers and,
  - ii) with respect to provisions relating to stopping, standing and parking, including parking meter control, by Municipal Law Enforcement Officers as appointed by the Council of the City of Brampton.

Traffic Signs & Other Appurtenances:

3. The Commissioner is authorized to erect in or on any parking lot such gates, attendant shelters, signs and markers or other devices as may be necessary for the safe and efficient operation of such parking lot.
4. The Commissioner shall cause the amount of the fee for parking to be clearly displayed in a conspicuous place in or on each parking lot by means of a sign or signs.

Authorization To Operate Parking Facilities:

5. The Commissioner for the purpose of controlling and regulating parking in or on parking lots and for the purpose of measuring and recording the time during which a motor vehicle has been parked and the amount of fee to be collected is hereby authorized:
  - i) to erect, maintain and operate parking meters in or on those parking lots set out in Schedule A of this by-law,
  - ii) to erect, maintain and operate parking machines in or on those parking lots set out in Schedule B of this by-law,
  - iii) to station attendants in or on those parking lots set out in Schedule C of this by-law,
  - iv) to designate parking spaces in connection therewith, and
  - v) to establish procedures for the issuance of monthly parking permits for the parking lots set out in Schedules B, C and D of this by-law.

Permit Parking:

6. Any person may obtain from the City a permit to park a motor vehicle in a specified parking lot for the current month or unexpired period thereof upon payment of the prescribed fee as set out in Schedules B, C and D of this by-law.
7. No person shall park a motor vehicle in or on any parking lot if such a motor vehicle is in excess of 3000 kilograms gross vehicle weight.
8. No person shall use any parking lot:
  - i) for the purpose of parking a motor vehicle while repairs are being made to such vehicle, unless such repairs are of an emergency nature and are required to be made so that the motor vehicle can be moved from parking lot,
  - ii) for the purpose of storing or keeping a vehicle or vehicles or
  - iii) for any purpose other than parking purposes, unless permission to do so is granted by the City.

9. No person shall park or leave any motor vehicle in or on any part of a parking lot where, by means of one or more signs, it is indicated that such parking or leaving is not authorized.
10. No person shall deposit or cause to be deposited in any parking meter or parking machine any slug, device, or other substitute for a coin of Canada or of the United States of America.
11. No person shall deface, injure, tamper with, open or break, destroy or impair the usefulness, of any parking meter, parking machine, or other parking device.
12. If a parking space has been designated by lines painted on the surface of the parking lot, no person shall park any motor vehicle in such a manner that it is not wholly within the area designated as a parking space.

#### Types of Parking Lots

##### Meter Control Only:

13. Where parking meters have been erected, no person shall park any motor vehicle in a parking space, in or on any of the parking lots named and located in Columns 1 & 2 respectively of Schedule A to this by-law during the hours of operation set out in Column 5 of said Schedule A unless the meter controlling such parking space is used and the fee deposited thereunder in accordance with the rate set out in Column 3 of the said Schedule A and the meter is set in operation in accordance with the instructions given thereon.
14. The fee stipulated for a given period in a parking space shall be paid for that period or any portion thereof, and the period shall be measured by the parking meter controlling such parking space.
15. No person shall allow a vehicle to remain in a parking space for a period longer than that set out in Column 4 of the said Schedule A.
16. No person shall allow a vehicle to remain in a parking space where the parking meter controlling that parking space shows the "Time Expired" or "Violation" flag.
17. Plan No. 1 shall be considered part of Schedule A.

##### Pay & Display:

18. Where parking machines have been erected and are in operation in or on any parking lot named and located in Columns 1 & 2 of Schedule B of this by-law the duration of the period of parking permitted shall be measured by the parking machine and shall be the period of duration indicated on the card issued by the parking machine next following the activation thereof (such period being hereinafter referred to as the "permitted period").
19. No person shall park any motor vehicle in or on any parking lot where a parking machine is in operation:
  - (i) during the permitted hours of operation set out in Column 5 of the said Schedule B, unless
    - (a) the parking machine controlling such parking lot is used and a fee deposited thereunder in accordance with the rate set out in Column 3 of the said Schedule B and the machine is activated,
    - or
    - (b) the motor vehicle has a valid monthly permit purchased for the fee prescribed in Column 4 of said Schedule B,

(ii) at any time other than during the permitted hours of operation.

20. The card issued by the parking machine or a valid monthly permit for the motor vehicle parked in or on the parking lot shall be placed inside the windshield of the motor vehicle in such position that the writing and markings thereon face outward and can be easily seen from outside the motor vehicle.

21. Plan No. 2 shall be considered part of Schedule B.

Attendant Controlled:

22. No person shall park any motor vehicle in or on any parking lot named and located in Columns 1 & 2 respectively of Schedule C of this by-law during the hours of operation set out in Column 5 of said Schedule C, unless:

( i ) upon entrance to the lot a ticket is obtained indicating the time of entrance from either the parking lot attendant or from a machine installed at the entrance for that purpose.

and upon exiting such ticket is surrendered to the parking lot attendant and the fee paid in accordance with the rate set out in Column 3 of said Schedule C

or

(ii) the motor vehicle has a valid monthly permit purchased for the fee prescribed in Column 4 of said Schedule C which is presented to the attendant for inspection upon entering and exiting the parking lot.

23. Plan Nos. 3 & 4 shall be considered parts of Schedule C.

Permit Only Operation:

24. No person shall park any motor vehicle in or on any parking lot named and located in Columns 1 & 2 of Schedule D of this by-law during the hours of operation set out in Column 4 of said Schedule D unless the motor vehicle has a valid monthly permit purchased for the fee prescribed in Column 3 of said Schedule D.

25. The permit shall, while the motor vehicle is parking in or on any parking lot listed in Column 1 of said Schedule D, be placed inside the windshield of the motor vehicle in such position that the writing and markings on the permit face outward and can be easily seen from outside the motor vehicle.

26. Plan No. 5 shall be considered part of Schedule D.

Penalties

27. Where a motor vehicle is found parked or standing in contravention of the provisions of ~~is~~ this by-law, the enforcing official may issue a summons, or issue and attach to or place on the motor vehicle a ticket in the form of a serially numbered notice stating:

( i ) the licence number and a concise description of the motor vehicle;

( ii ) that the motor vehicle is unlawfully parked;

(iii) the date, time and place of the alleged offence;

( iv ) that the owner or driver may make a voluntary payment to The Corporation of the

City of Brampton by attendance at its offices between the hours of 8:30 a.m. and 4:30 p.m., or by mail thereto, within five (5) days, exclusive of Saturdays, Sundays and holidays, after the day upon which the ticket was issued, and,

- ( v) that in the event of a failure to make such payment, a summons will be issued pursuant to the Summary Convictions Act.
28. Where payment has been made in accordance with section 27 of this by-law, no further proceedings shall be taken under this by-law in respect to the offence alleged in the ticket.
29. An enforcing official, upon discovery of any motor vehicle parked or standing in contravention of the provisions of this by-law, may cause it to be moved or taken to and placed or stored in a suitable place, at the owner's expense, and all costs and charges for removing, care and storage thereof, if any, are a lien upon the motor vehicle which may be enforced in the manner provided by section 52 of the Mechanics' Lien Act. (R.S.O. 1980, C. 261 as amended.)
30. Subject to sections 31 and 32, every person who contravenes any of the provisions of this by-law is guilty of an offence and is liable upon conviction to a penalty not exceeding the sum of two thousand dollars (\$2,000.00), exclusive of costs, for each offence.
31. Every person who contravenes the provisions of sections 7,9,12, 19,22 and 24 is guilty of an offence, and upon conviction, is liable to a penalty of not more than \$10.00 for the first offence, and not more than \$25.00 for every subsequent offence, exclusive of costs.
32. Every person who contravenes the provisions of sections 13,15 and 16 is guilty of an offence, and upon conviction, is liable to a penalty of not more than \$5.00.
33. The driver of a motor vehicle, not being the owner, is liable to any penalty provided in this by-law, and the owner of the motor vehicle is also liable to such a penalty unless at the time the offence was committed, the motor vehicle was in the possession of a person other than the owner without the owner's consent.

#### General Provisions

##### Expression of Time:

34. Where, in this by-law, any expression of time occurs or when any hour or other point of time is stated, the time referred to or intended shall be reckoned as Standard Time except in periods when Daylight Saving Time is declared to be in effect, then, during such periods, the time referred to or intended shall be reckoned as Daylight Saving Time.

##### Exceptions:

35. The provisions of sections 7,12,13,15,16,18,19,22 and 24 of this by-law shall not apply to ambulances, police and fire department vehicles, and any vehicles while actually engaged in works undertaken for or on behalf of the Corporation of the City of Brampton, the Regional Municipality of Peel; or any utility, if compliance therewith, having regard to all circumstances, would be impractical.
36. Where a motor vehicle operated by or conveying a physically handicapped person properly displays a valid identifying marker issued in accordance with the provisions of By-law 193-83, the owner and driver of said vehicle are exempt from the provisions of Section 19 of this by-law.

Highway Traffic Act:

37. Where there is any conflict between the provisions of this by-law and the provisions of the Highway Traffic Act, the provisions of the Highway Traffic Act shall prevail.

Headings And Subheadings:

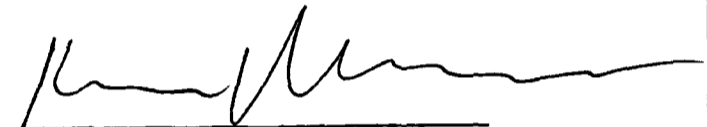
38. The headings and subheadings used in this by-law shall not form a part of the by-law, but shall be deemed to be inserted for convenience of reference only.

By-laws Repealed:

39. By-law 149-83 and all amendments thereto are hereby repealed.

Effective Date:

40. This by-law comes into force on the 1st day of April, 1987.  
READ a FIRST, SECOND and THIRD TIME and PASSED in Open Council  
this 23rd day of March, 1987.

  
\_\_\_\_\_  
Kenneth G. Whillans, Mayor

  
\_\_\_\_\_  
Leonard J. Mikulich, Clerk

APPROVED  
AS TO FORM  
LAW DEPT.  
BRAMPTON  
  
DATE

BY-LAW

SCHEDULE A

PARKING LOTS - METER CONTROL ONLY

COLUMN 1 PARKING LOT NAME	COLUMN 2 PARKING LOT LOCATIONS	COLUMN 3 FEES	COLUMN 4 MAXIMUM PARKING PERIOD	COLUMN 5 HOURS OF OPERATION
McMurphy Lane	McMurphy lane east side of George Street North (See Plan 1)	5¢/25 Minutes 10¢/30 Minutes 25¢/75 Minutes	120 Minutes	9:00 a.m. - 6:00 p.m. Monday to Saturday

BY-LAW

SCHEDULE B

PARKING LOTS - PAY & DISPLAY OPERATION

COLUMN 1 PARKING LOT NAME	COLUMN 2 PARKING LOT LOCATION	COLUMN 3 FEE	COLUMN 4 PERMIT FEE	COLUMN 5 HOURS OF OPERATION
Roselea	East side of Union Street opposite Nelson Street East (See Plan 2)	40¢ per hour or part thereof	\$25.00 for each calendar month or part thereof	8:00 a.m. - 5:00 p.m. Monday to Friday





BY-LAW

SCHEDULE D

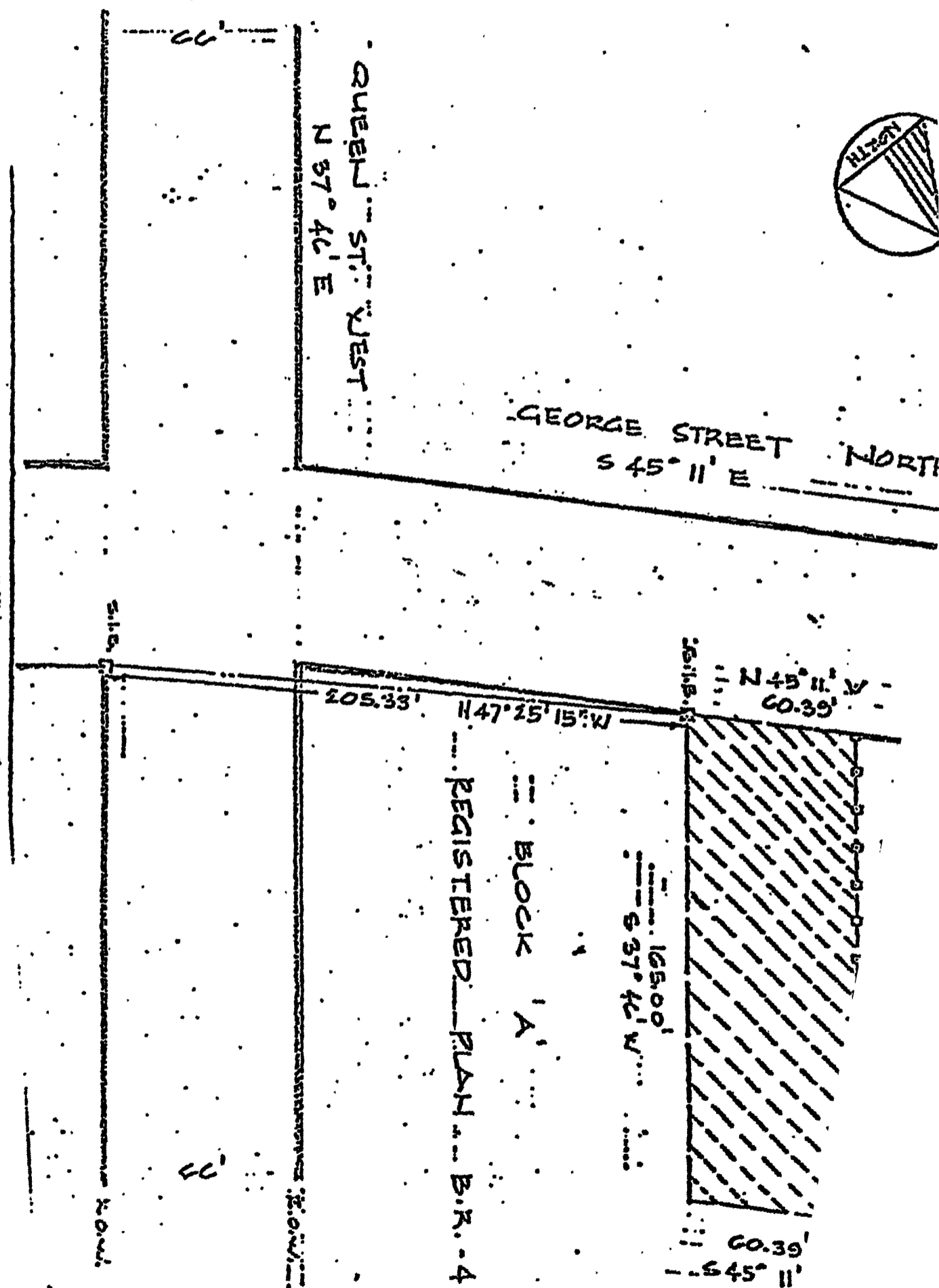
PARKING LOTS - PERMIT ONLY OPERATION

---

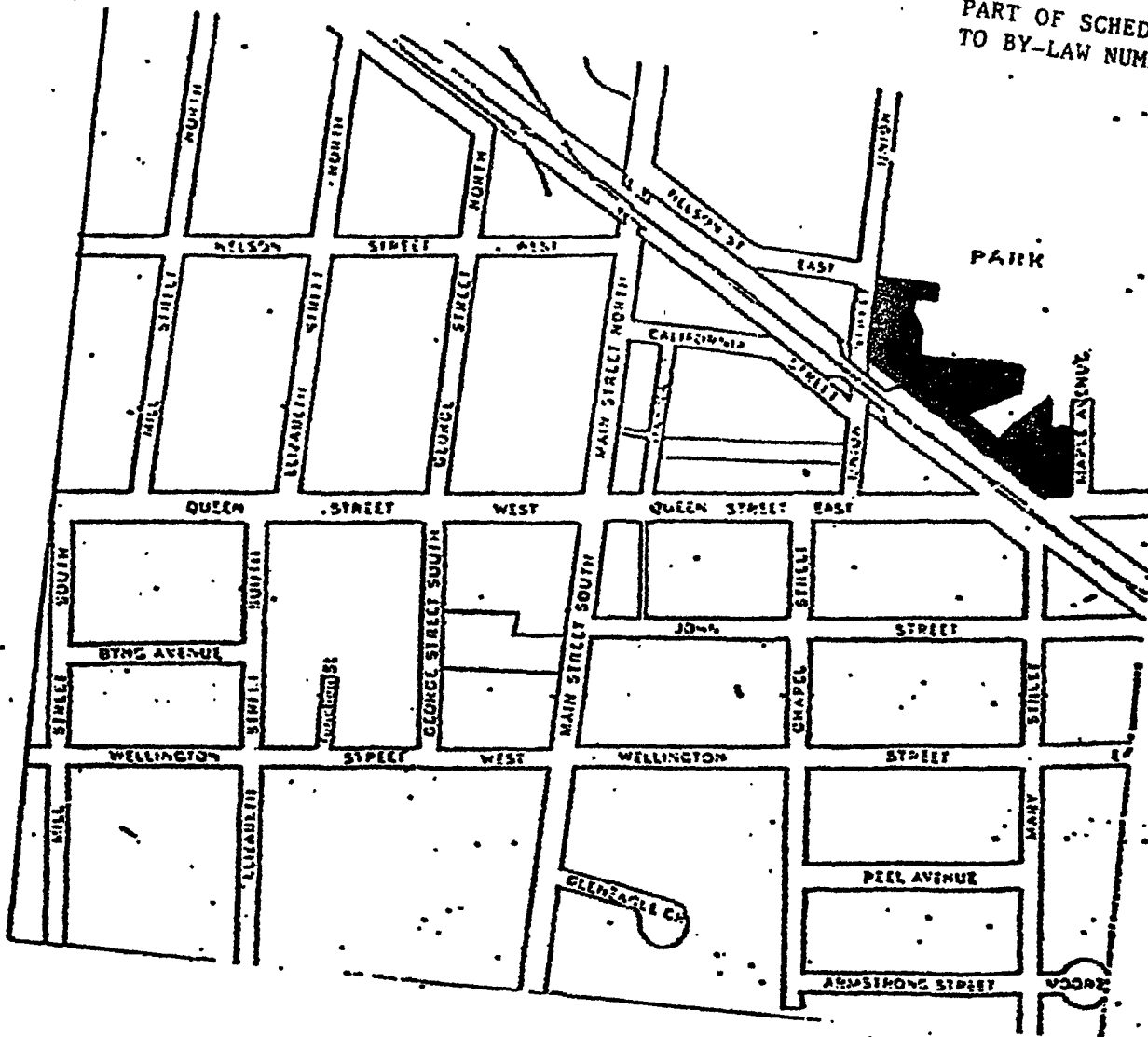
COLUMN 1 PARKING LOT NAME	COLUMN 2 PARKING LOT LOCATION	COLUMN 3 PERMIT FEE	COLUMN 4 HOURS OF OPERATION
George Street North	East side of George Street North North of Nelson Street West	\$40.00 for each calendar month or part thereof	8:00 a.m. - 6:00 p.m. Monday - Friday

---

PLAN 1  
PART OF SCHEDULE  
TO BY-LAW NUMBER

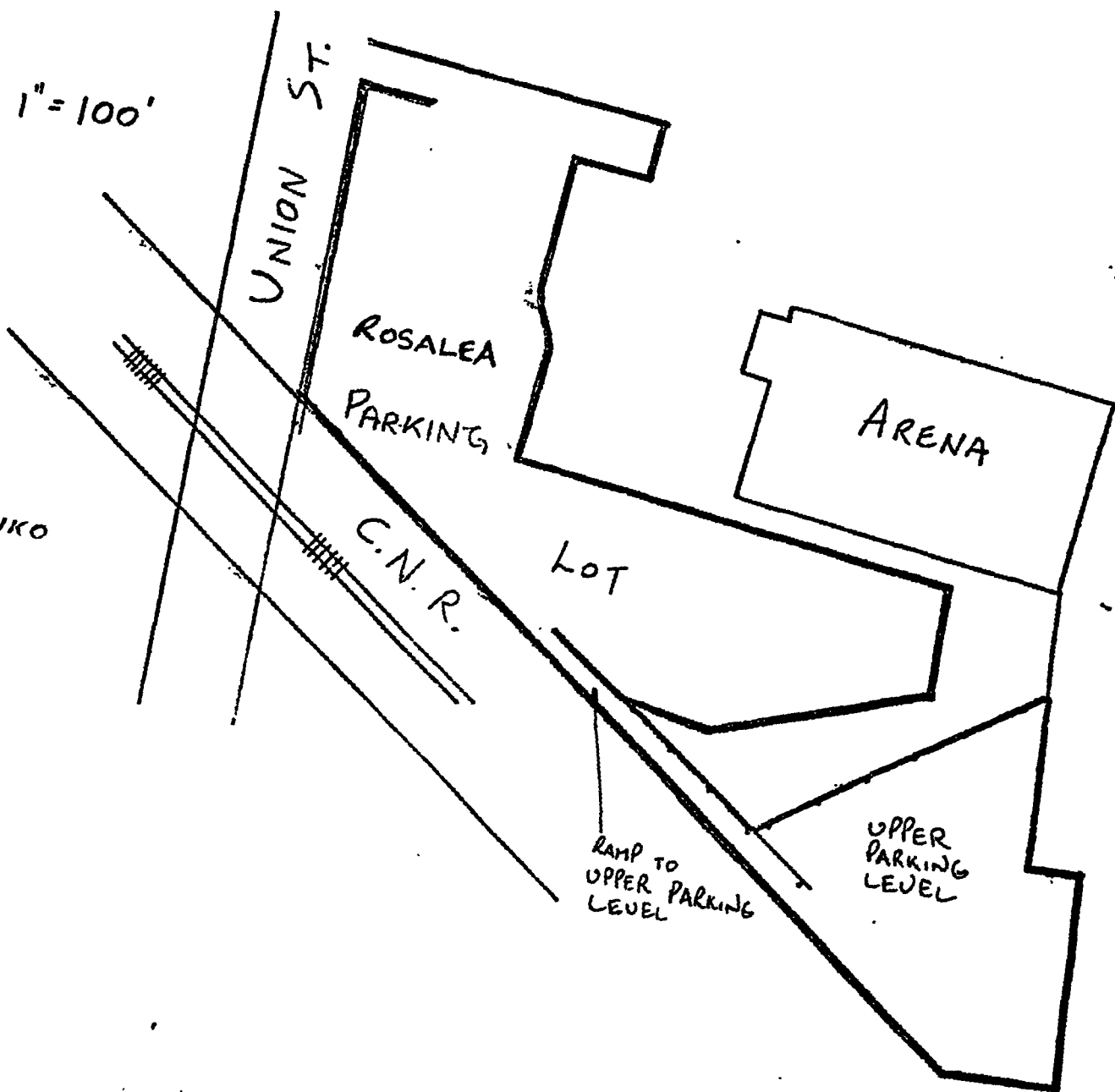


CITY  
1916

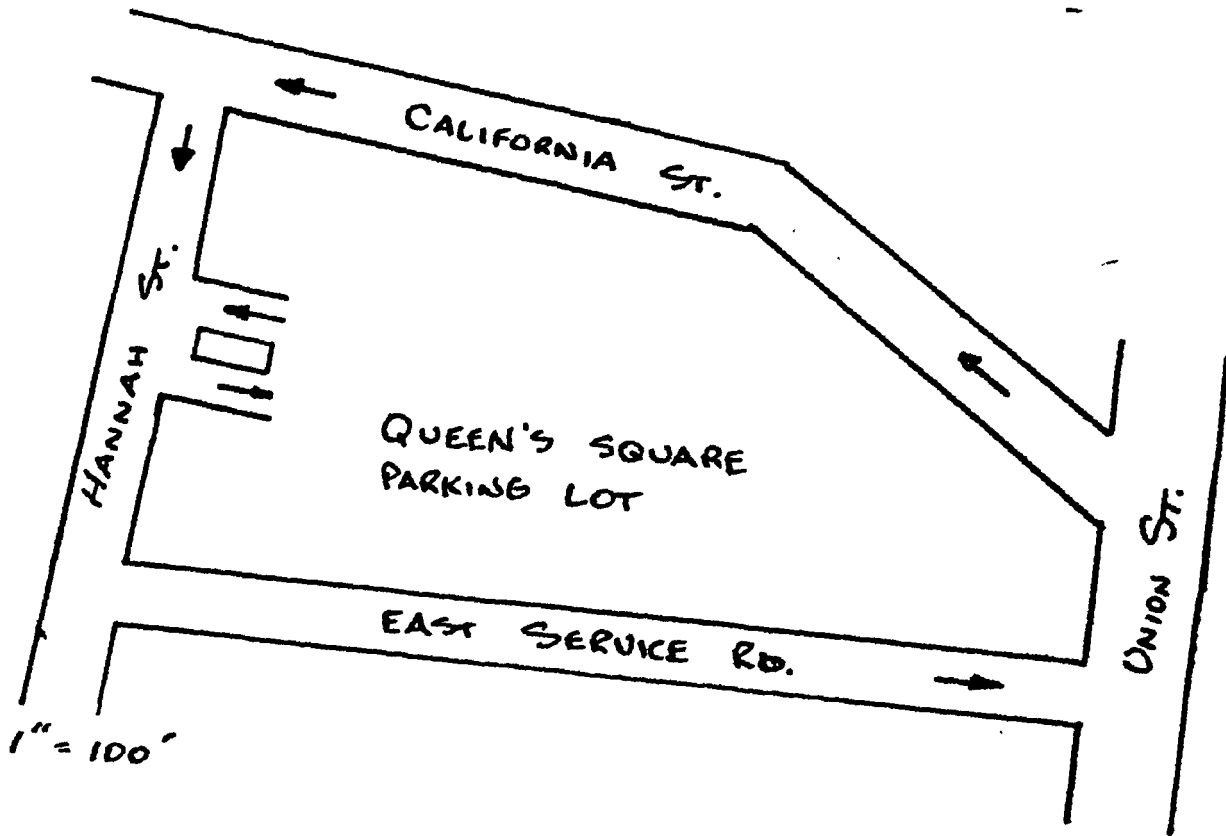
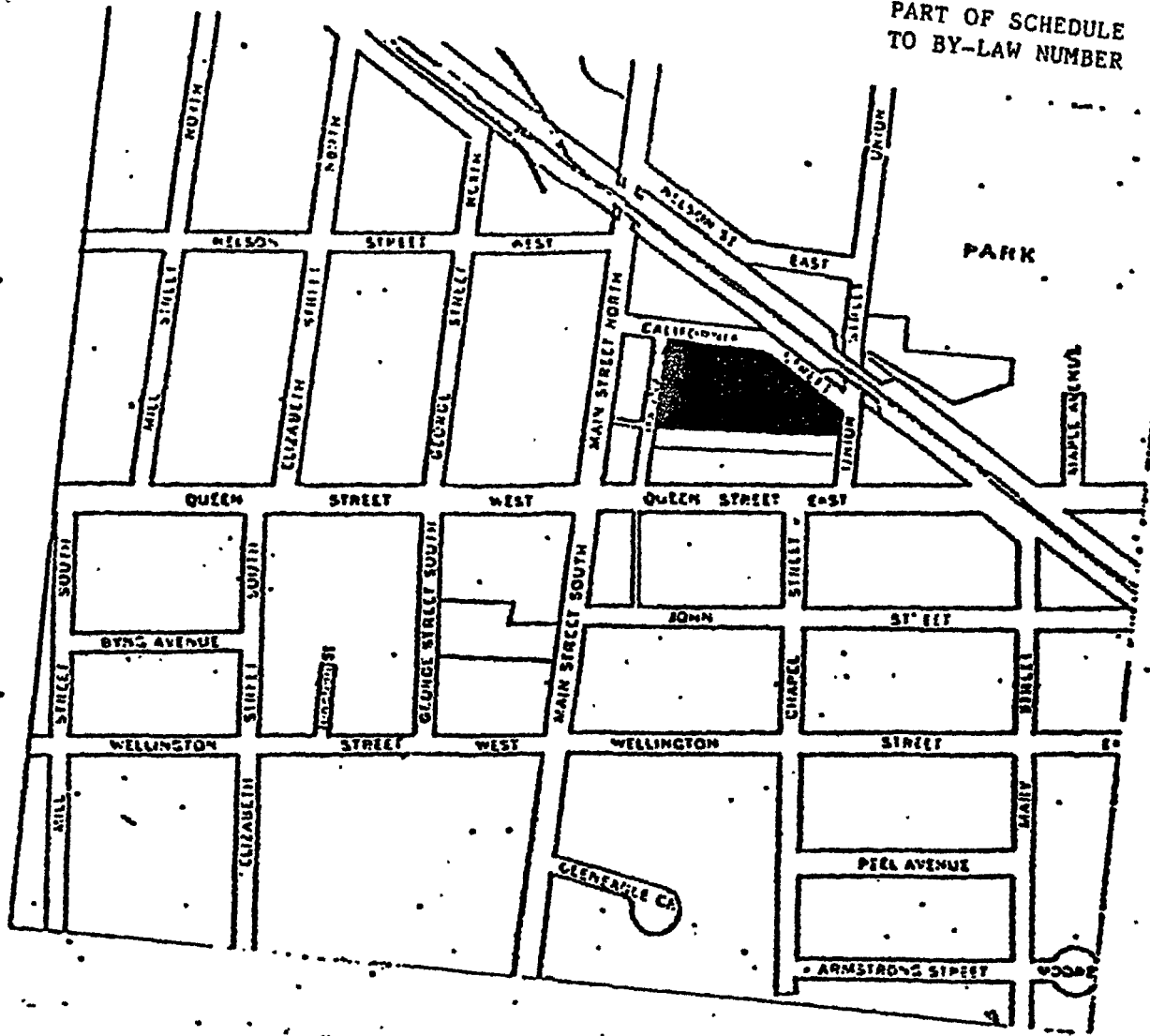


SCALE 1" = 100'

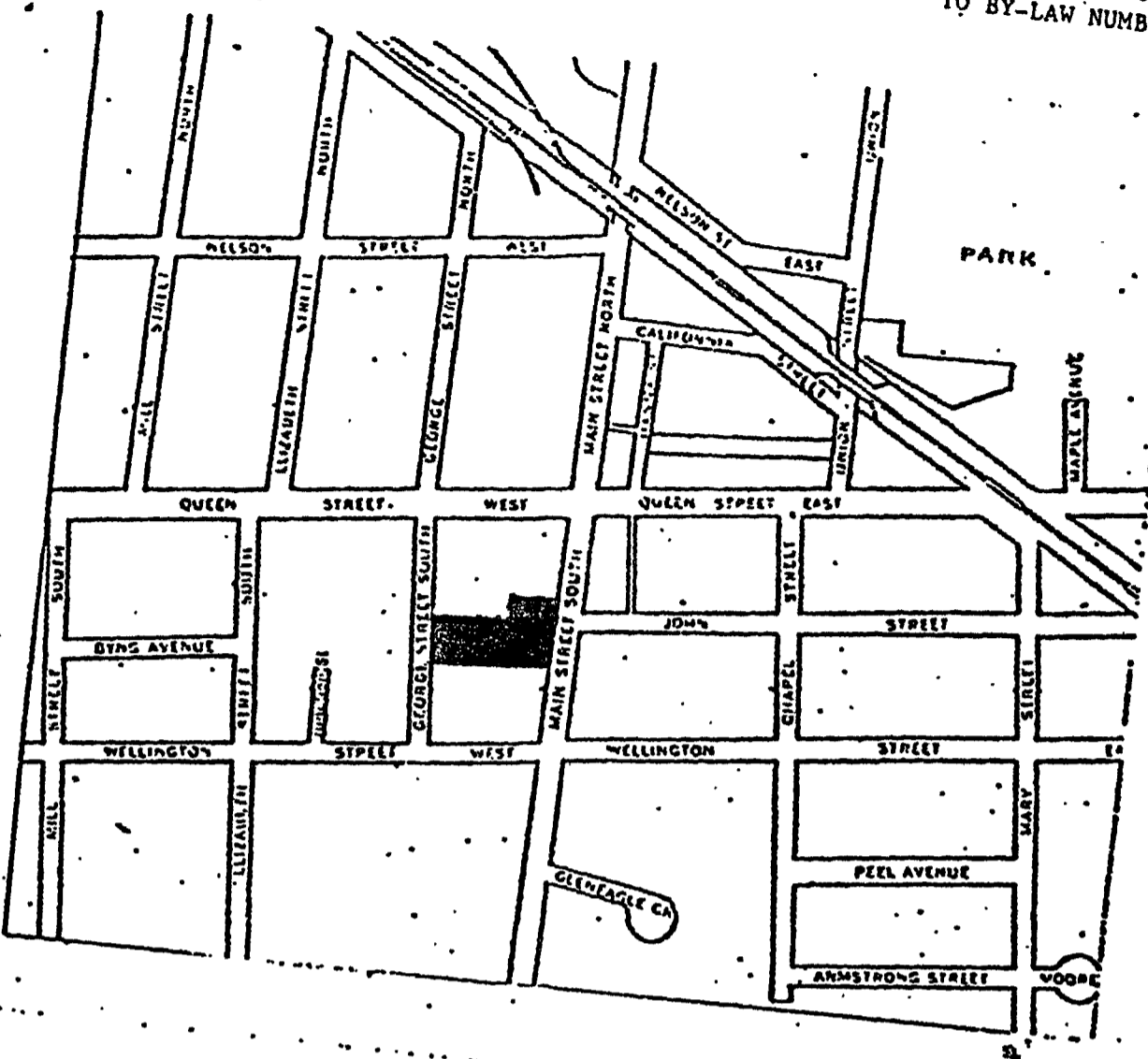
DRAWN BY -  
A.K. ISASENKO



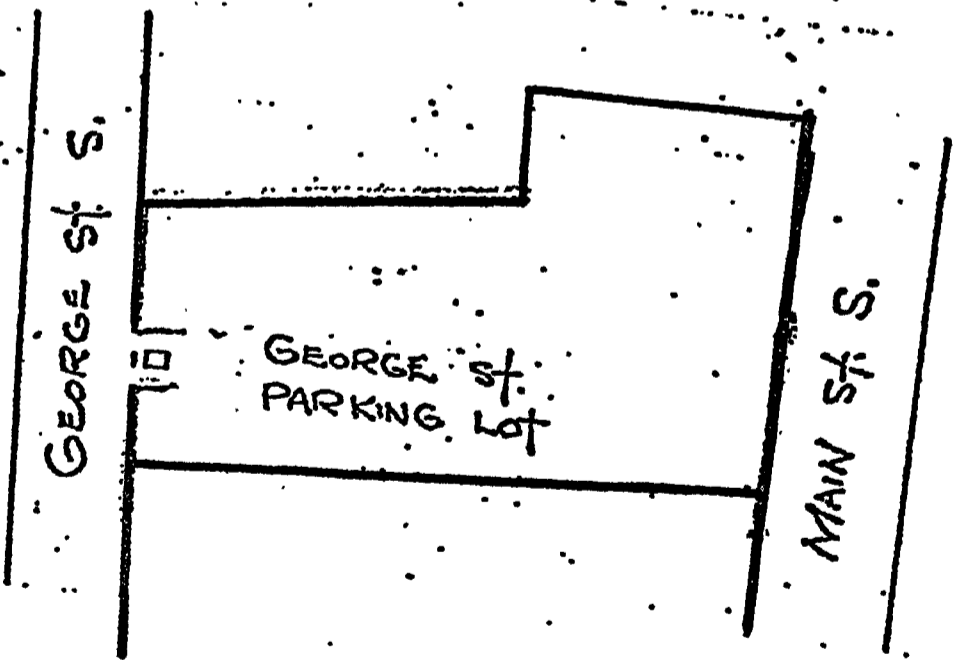
SCALE:  
1" = 150'



SCALE: 1" = 100'



SCALE: 1" = 100'



will by: R.W.H.

PLAN 5  
PART OF SCHEDULE B  
TO BY-LAW NUMBER

