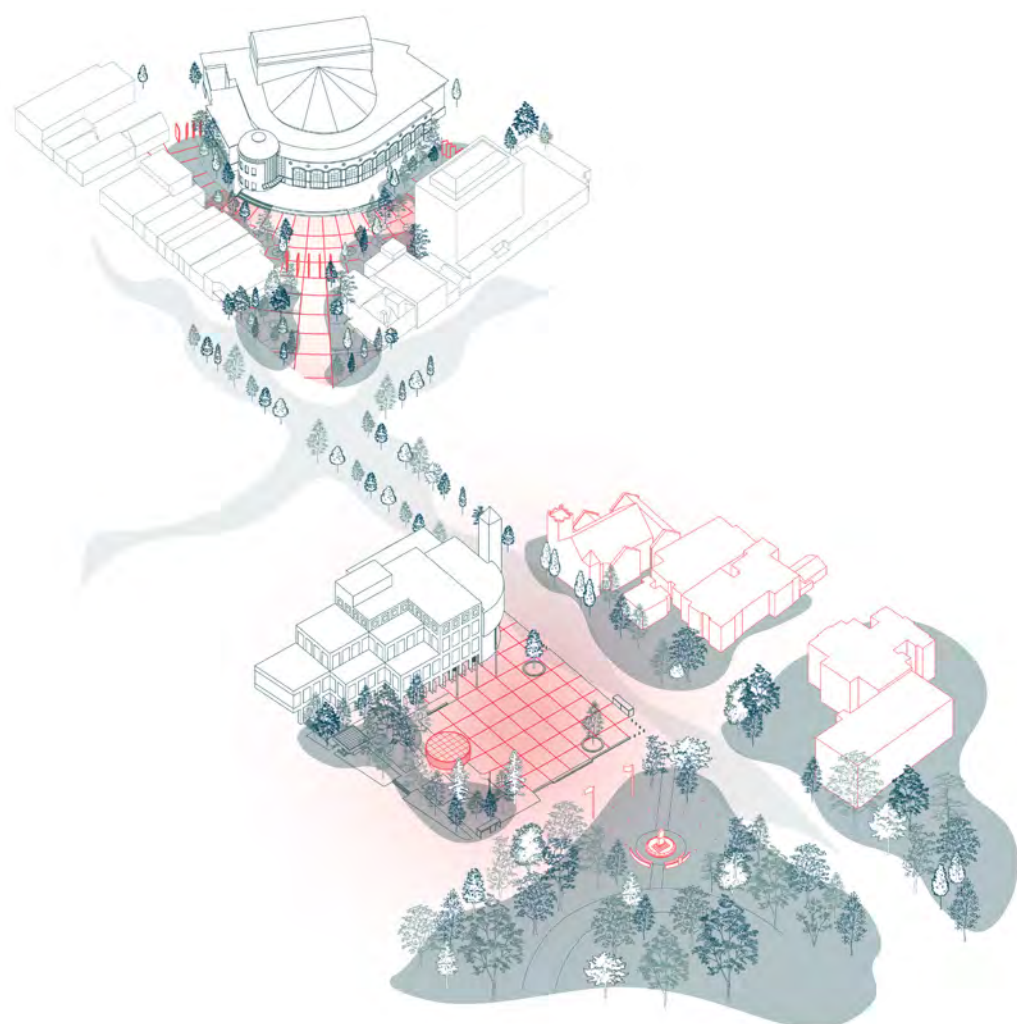




Redevelopment of Ken Whillans Square and Garden Square Brampton, Ontario, Canada

Introduction



Squares in Dialogue

In the heart of Brampton, two civic squares lie just a hundred meters apart, connected by Main Street and united by a shared mission: to serve as the civic and cultural center of the city. While Brampton's downtown is largely defined by the historic fabric of its streets, these two public spaces anchor a dynamic core where civic life, cultural expression, and everyday encounters converge.

Each square reflects the identity of the institution it fronts. Ken Whillans Square, facing City Hall, draws from the formal grid-ed building, opening generously to the city. Garden Square, embracing the Rose Theatre, is more intimate and introverted – a space shaped by the spatial richness of Theatre itself. Together, they form complementary halves of a new public landscape: one outward-facing and ceremonial, the other inward and immersive.

Architecture as generator

Both Squares are in conversation with the prominent adjacent public buildings. The new public spaces respect and intensify the relationship to Brampton City Hall and the Rose Theatre.

Extroverted & introverted

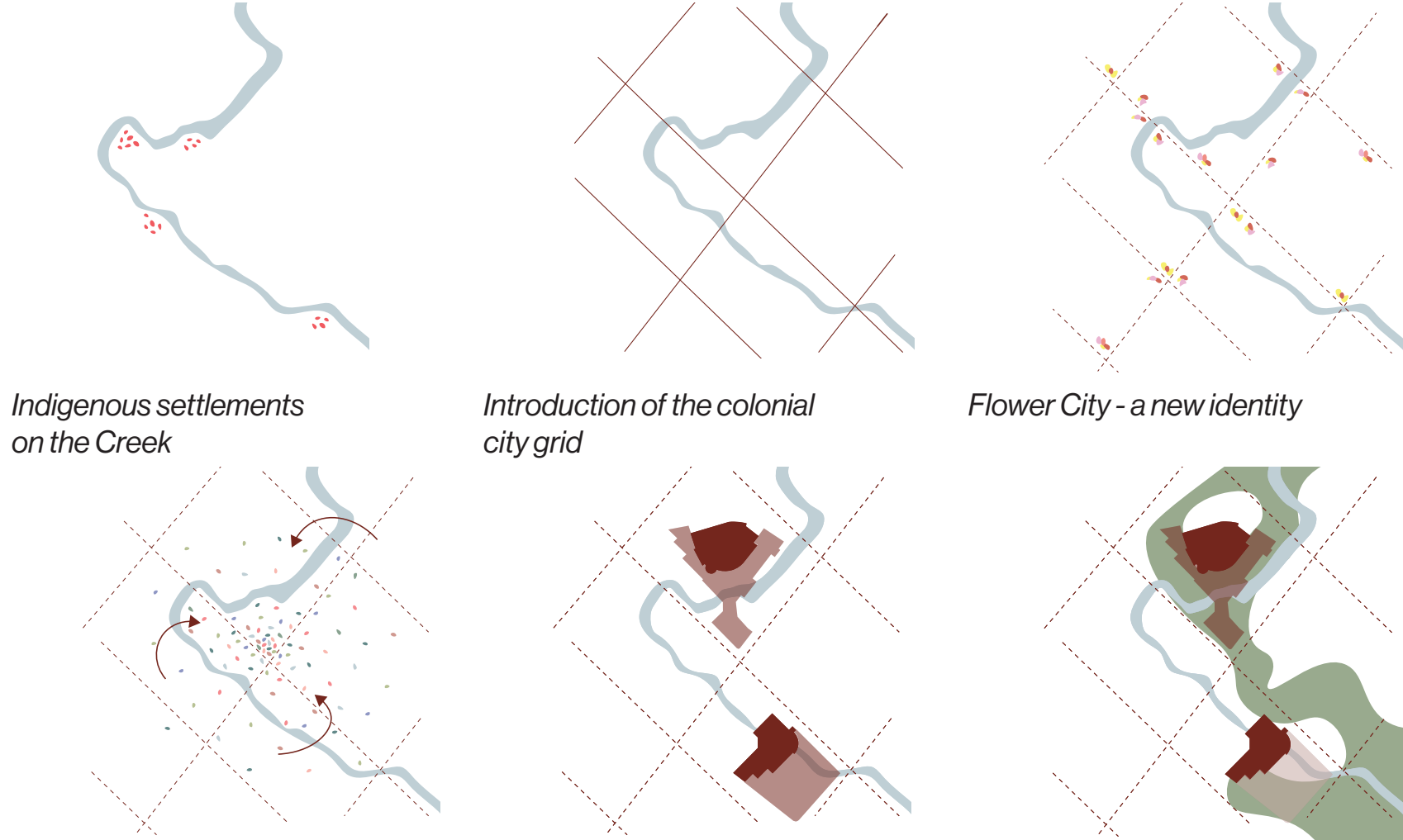
Ken Whillans Square opens itself up as a new civic heart of Brampton with connections to broader city centre and historic heart of the city, while Garden Square becomes a highly defined cultural hub and incubator.

Green framework

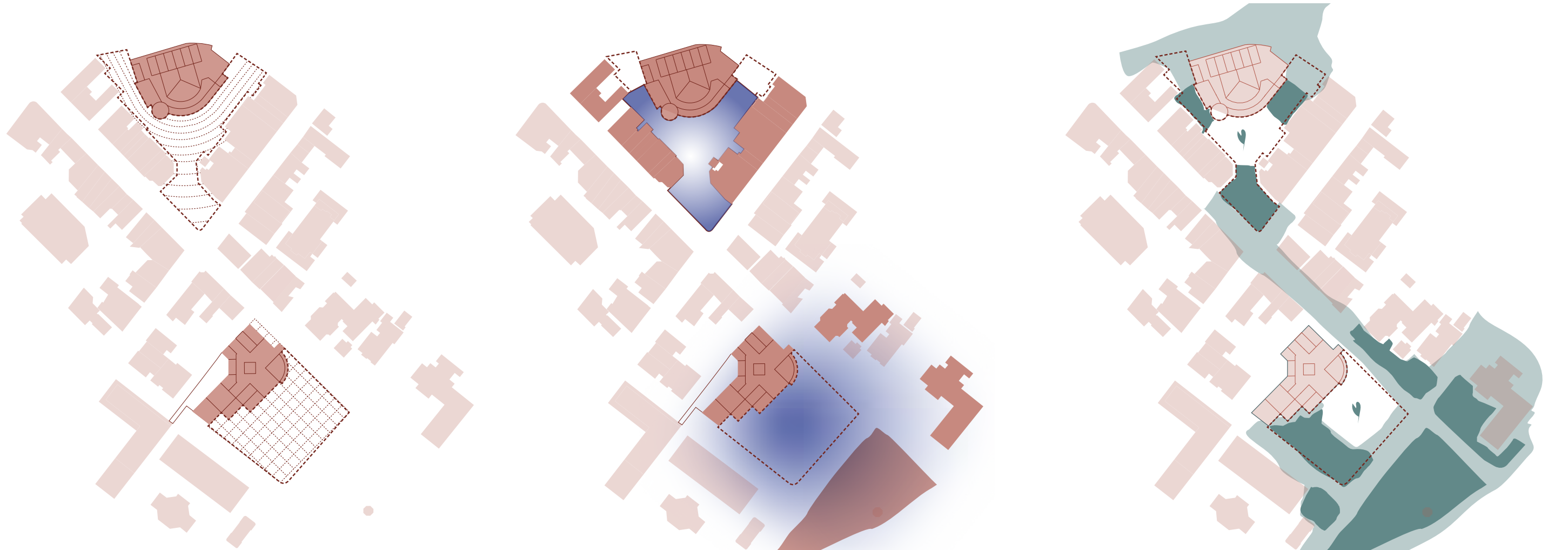
Landscape in the form of trees, plantings, and flowering vegetation build on Brampton's identity as Canada's Flower City to frame each square, strengthening their spatial definition as urban rooms, orchestrating their relation to the context.



Brampton Green Loop



The history of Brampton's urban development



Distinct squares with subtle relations



Plan of both squares, 1:500

A transformative commons



Ken Whillans Square

Transformative Commons

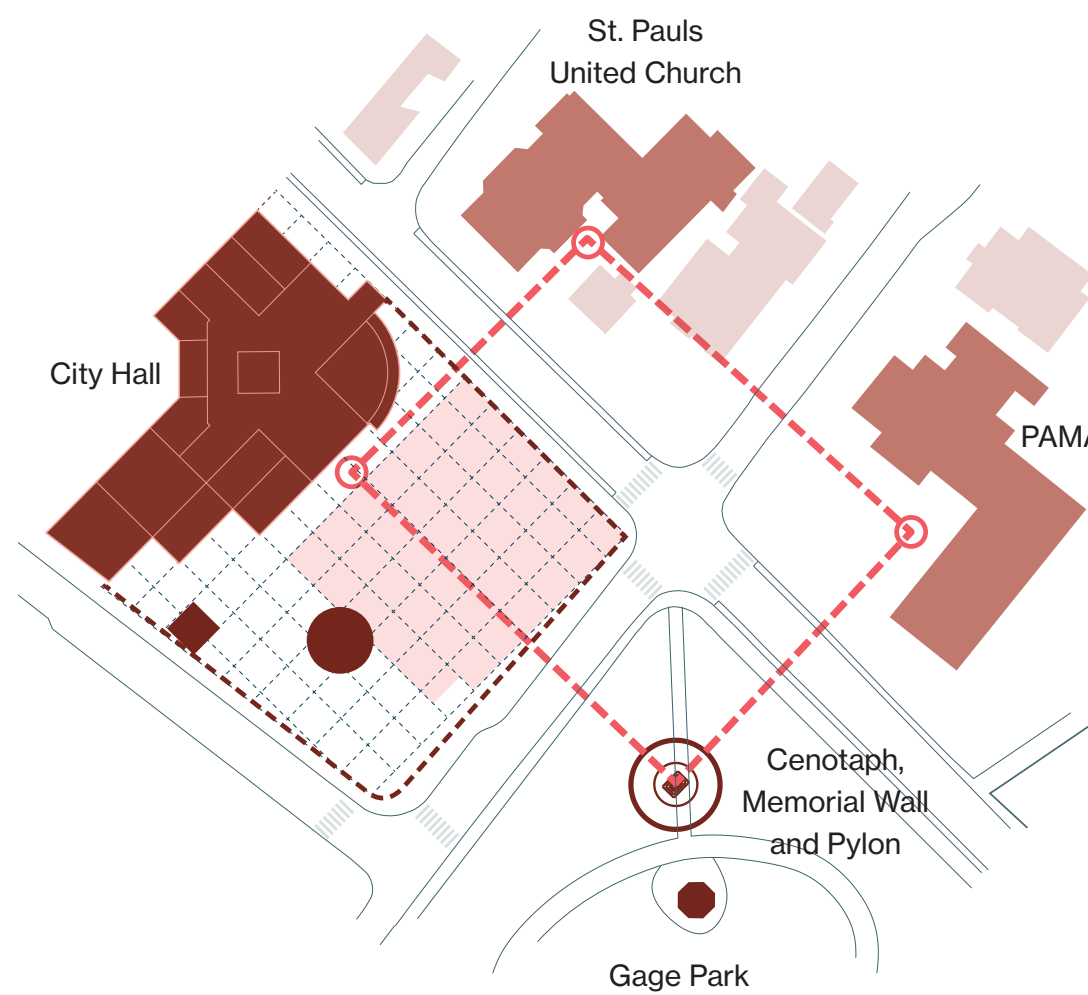
In front of City Hall, an open commons unfolds as a framework for transformation. This space is not fixed in identity, but alive with potential—shaped by water, vegetation, people, and time.

At the heart of the square lies a fluid water element along a gently sloping depression — a living reference to Etobicoke Creek, which once flowed through the site. On quiet mornings, a thin sheet of water glides across the surface, reflecting the sky. On summer days, the space comes alive as fountains rise from the ground, inviting spontaneous play. For formal occasions, the water rises in a grid formation. And when the City gathers in full, the water disappears, and the Square's regraded surface becomes an open stage. In winter, the Square transforms again. Trees in the Flower Forest are lit up as

part of the seasonal light festival. A public Christmas tree rises in the open space and around it, temporary market stalls shape a festive atmosphere — complementing Gage Park's skating trail.

The Square is visually oriented to Gage Park, and to the relocated Cenotaph and new Memorial Wall, a civic spine for solemn ceremonies each year. This new location provides a peaceful, green setting for Remembrance Day.

The Square is not fixed in identity, but adaptive. Its design allows for diverse uses and experiences— from intimate encounters to civic events — a space that listens, responds, and becomes what Brampton needs it to be, day by day. And as in nature, there are always new experiences when you pass by the square — different states of water, blooms, leaf colors and lights in the evenings.



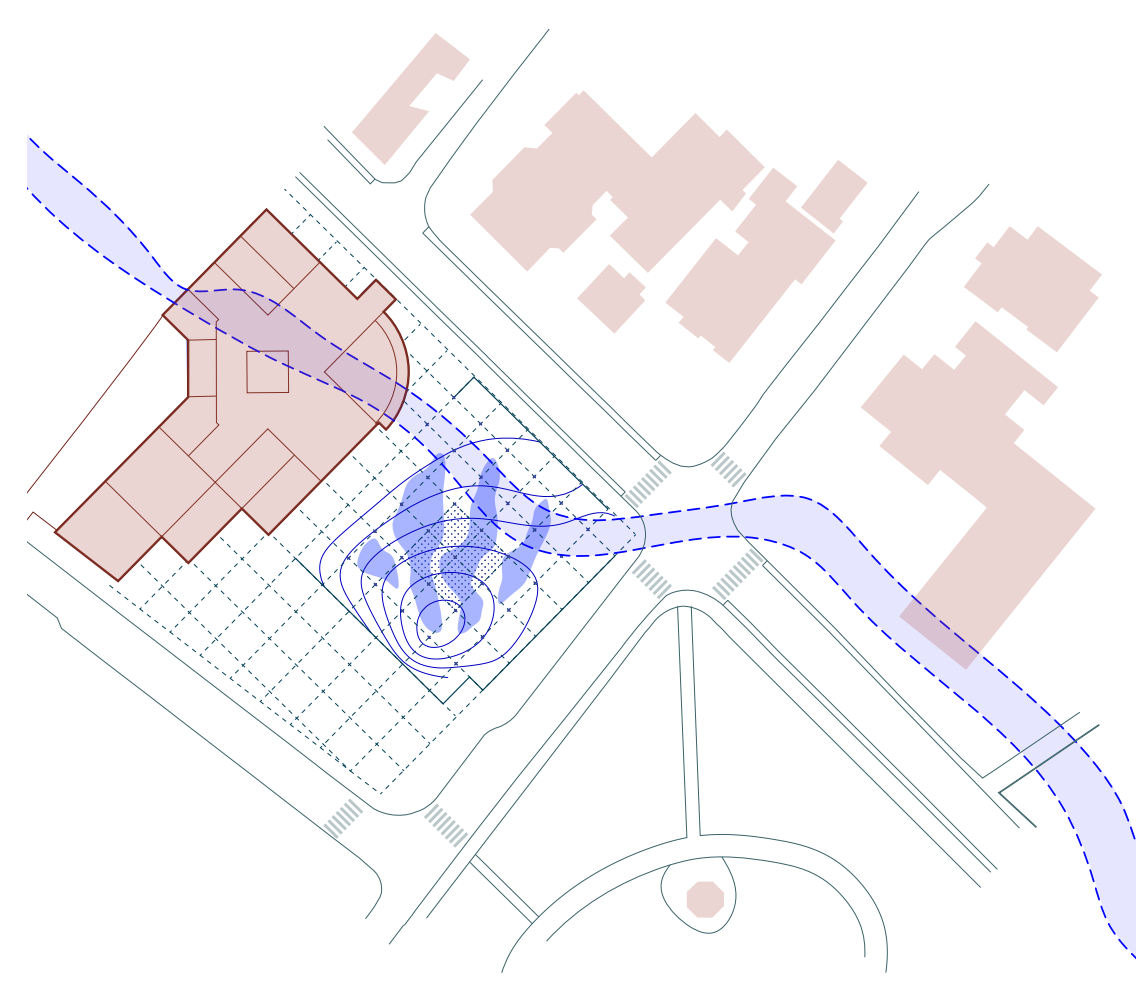
Create a civic center across

The square opens up towards Peel Art Gallery, Gage Park and St Paul's United Church with enhanced visual relationships that define a civic campus.



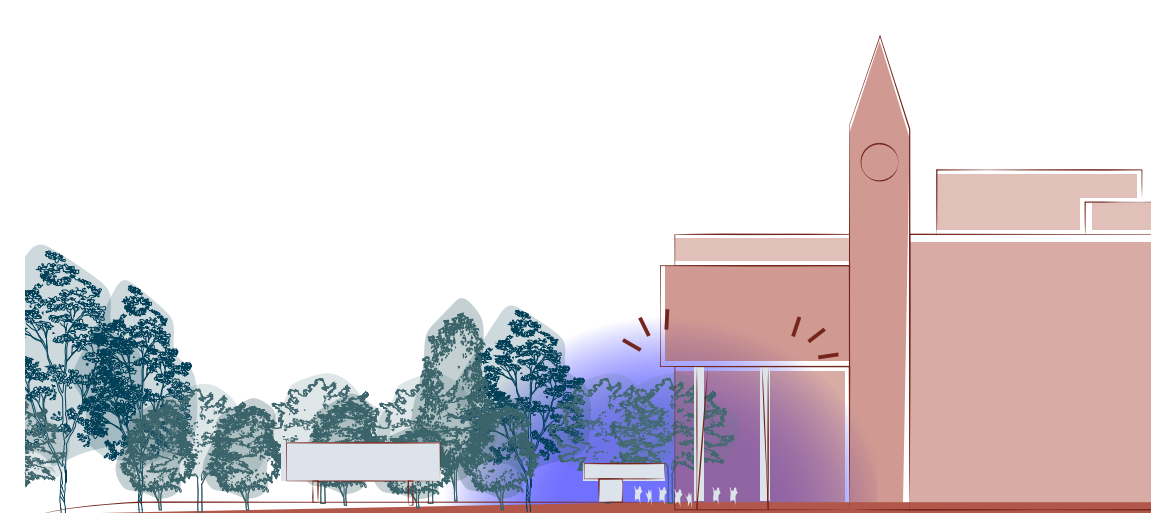
Preserve many existing trees and strengthen character

A Green connection to Gage Park strengthens character and biological value with new trees.



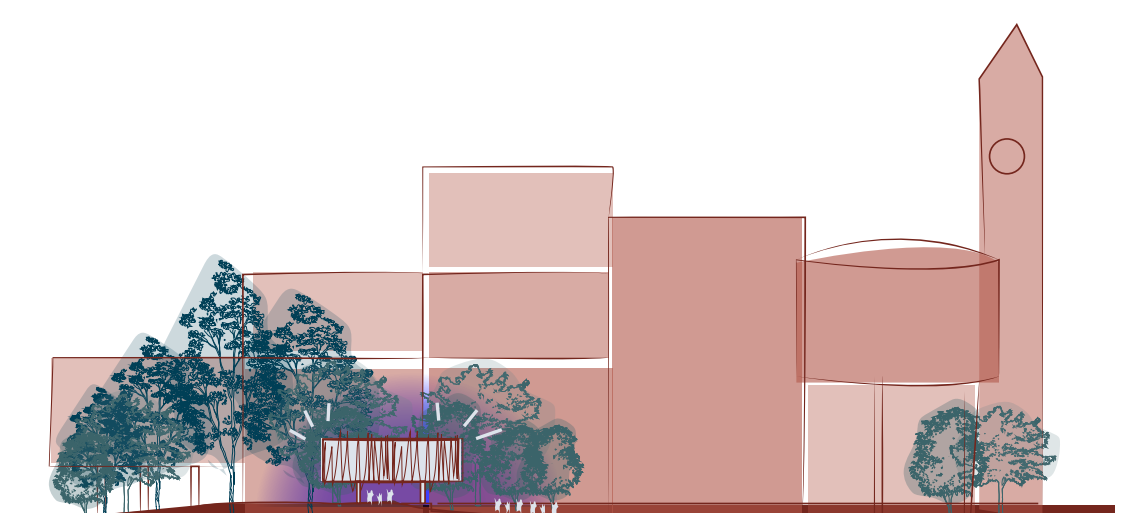
Water as a transformative element

A reference to Etobicoke Creek, which once flowed through the site.



Create openness and accessibility

The Square's pavement is elevated to allow for open facades at the ground floor of City Hall and ensure full accessibility.



Stage & pavilion

A new pavilion anchors the western edge — part performance stage, part civic shelter. It can host speeches and concerts, and serves as a shaded outdoor meeting room for Brampton's citizens

A new civic campus



Ken Whillans Square

The Urban Carpet

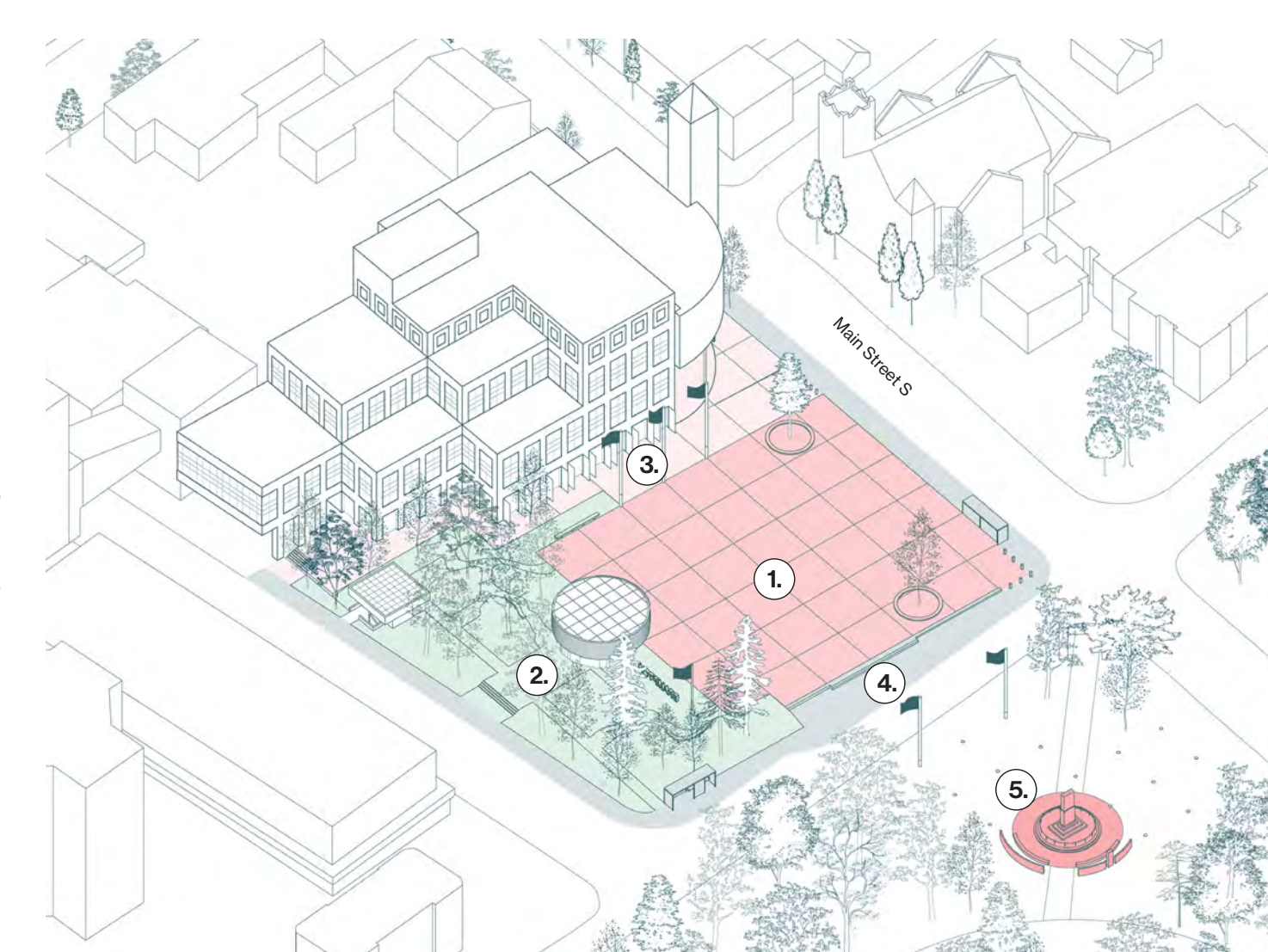
1. The adaptable space
A flexible, year-round public space in Downtown Brampton, with adaptable infrastructure that supports both civic ceremonies and community events, allowing smooth transitions between formal ceremonies and vibrant celebrations.

2. The Flower Forest and Civic Stage
Existing vegetation is thinned to improve sight lines and enhance safety. New native plantings create informal niches for small gatherings around benches placed among the park's sculptures, amongst the flowering landscape.

4. Framing a seamless transition
The Square's outer frame marks its precinct and provides a seamless transition to the public realm of the city. The outer edge features effortless grade changes,

seating, ramps, and stairs, inviting citizens and users of all ages and abilities to access the Square formal sides.

5. The Cenotaph and Memorial Wall
Surrounded by trees and vegetation, the Cenotaph's proposed new location within Gage Park restores this important marker together with its flags and integrates it with a new Memorial Wall and pylon—a peaceful, green setting for Remembrance Day celebrations. It is positioned with a strong axial relationship with City Hall and as the fourth corner that defines the civic center — City Hall, the Cenotaph & Memorial Wall, PAMA, and the First Baptist Church.



Elements of the new design



Civic Stage and Service Pavilion from the Flower Forest



Service Pavilion from George Street



Service Pavilion from George Street



Site section A



Site section B - Gage Park

Site section B - Ken Whillans Square



Interactive Space

A new pavilion anchors its western edge — part performance stage, part civic shelter. It hosts speeches and concerts and serves as a shaded outdoor meeting space. The ground floor of City Hall opens directly onto the Square, which is elevated to match its level, ensuring full accessibility and a seamless connection, allowing activities from the ground floor extend into the Square - a gesture of transparency and inclusion.

Around this Civic Stage, the Flower Forest unfolds: a small urban woodland blooming with native wildflowers, offering a moment of stillness and seasonal beauty — a place for rest, reflection, or quiet conversation.

Multifunctional surface

The Water Square is a dynamic surface that transforms with changing conditions of water. The presence of water evokes memories of Etobicoke Creek, which once flowed through this site.

In one state, water gently trickles across the square in narrow streams, reflecting the light of the sky. In another, soft fountains spring up randomly, inviting children to play. During formal events, the grid structure of the plaza becomes visible as fountains rise in orderly lines. In yet another state, a misty cloud drifts over the square, adding a sense of mystery while cooling the air on hot summer days. For larger events, the water recedes entirely, making space for crowds to gather.

Civic Stage from the Square with media screen revealed



Civic Stage from the Square with media screen concealed



Civic Stage housing an event



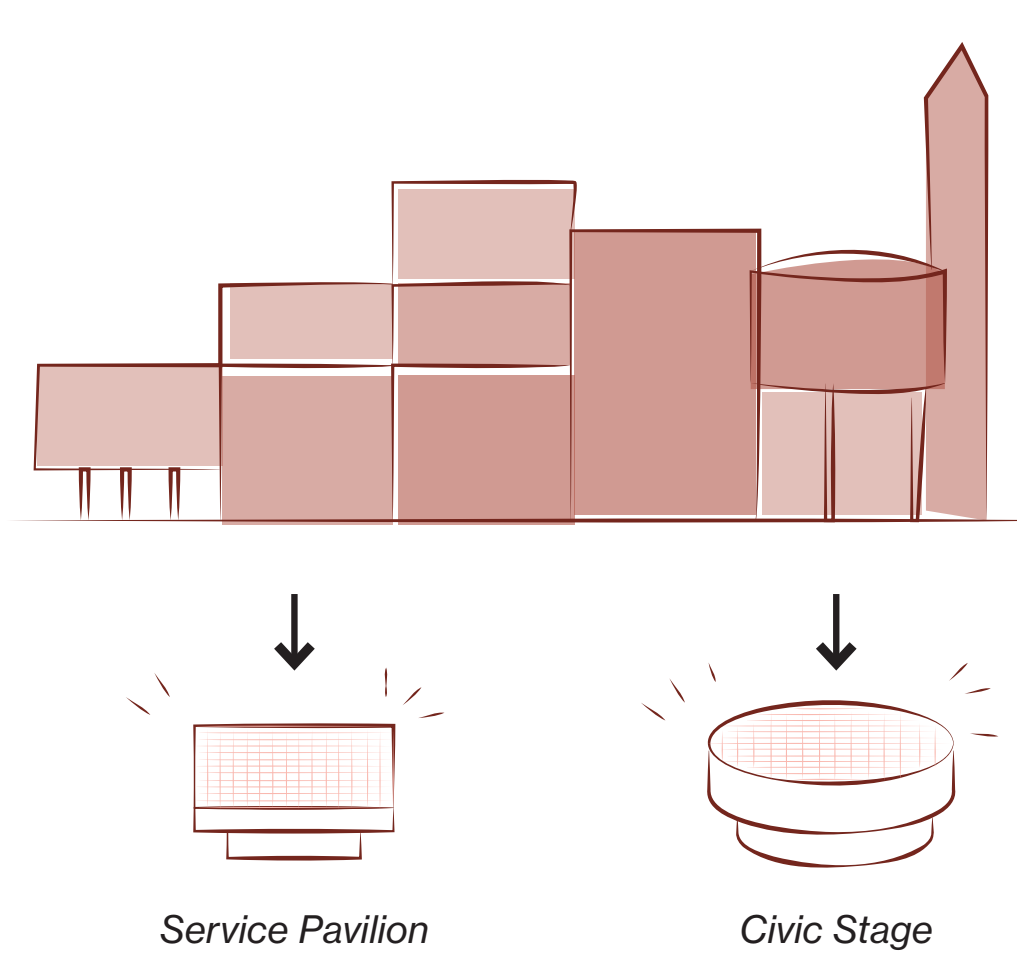
Civic Stage interior



A serene and playful urban heart



Ken Whillans Square



City Hall as a generator

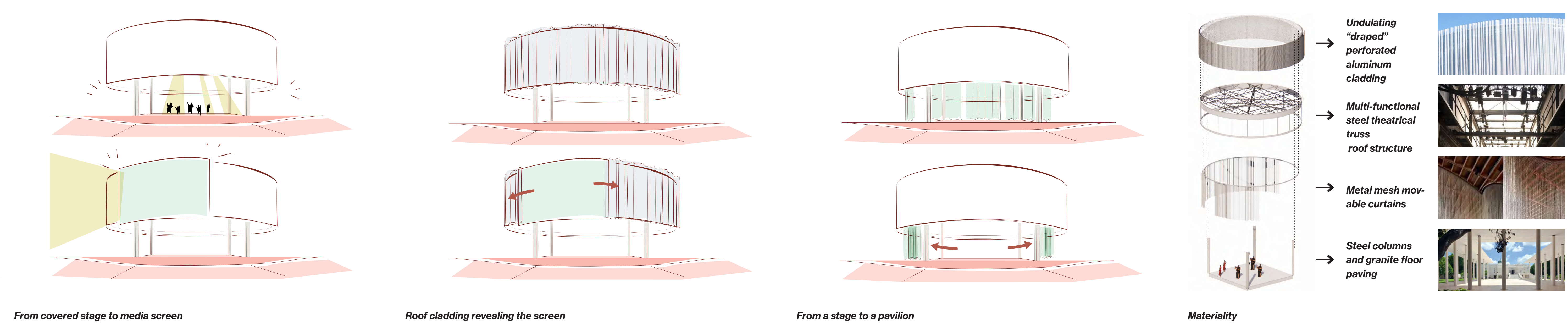
The characteristic architecture of City Hall, with its clustering of clear geometric shapes of cubes and cylinders is used as a departure point for the expression of the Civic Stage and Service Pavilion. The Civic Stage echoes the cylindrical form of the City Council Chamber while the Service Pavilion borrows from the cubic modularity of the body of the building.

Covered stage
The Civic Stage is equipped for live performances, events and ceremonies. A flexible "theatrical grid" is provided for in the roof structure, allowing for ease and flexibility of the hanging of lighting, speakers and other technical and scenographic elements, where all power, audio and networking connection points are built-in.

Media screen
The roof structure features an integrated digital media display screen that can support diverse programming including for messaging, broadcasting, live viewing, advertisements and civic announcements.

Roof cladding
Undulating, curtain-like perforated aluminum panels clad the technical roof structure. This allows for a controlled transparency and a light material expression that shimmers with the addition of evening lighting and reflects its surroundings.

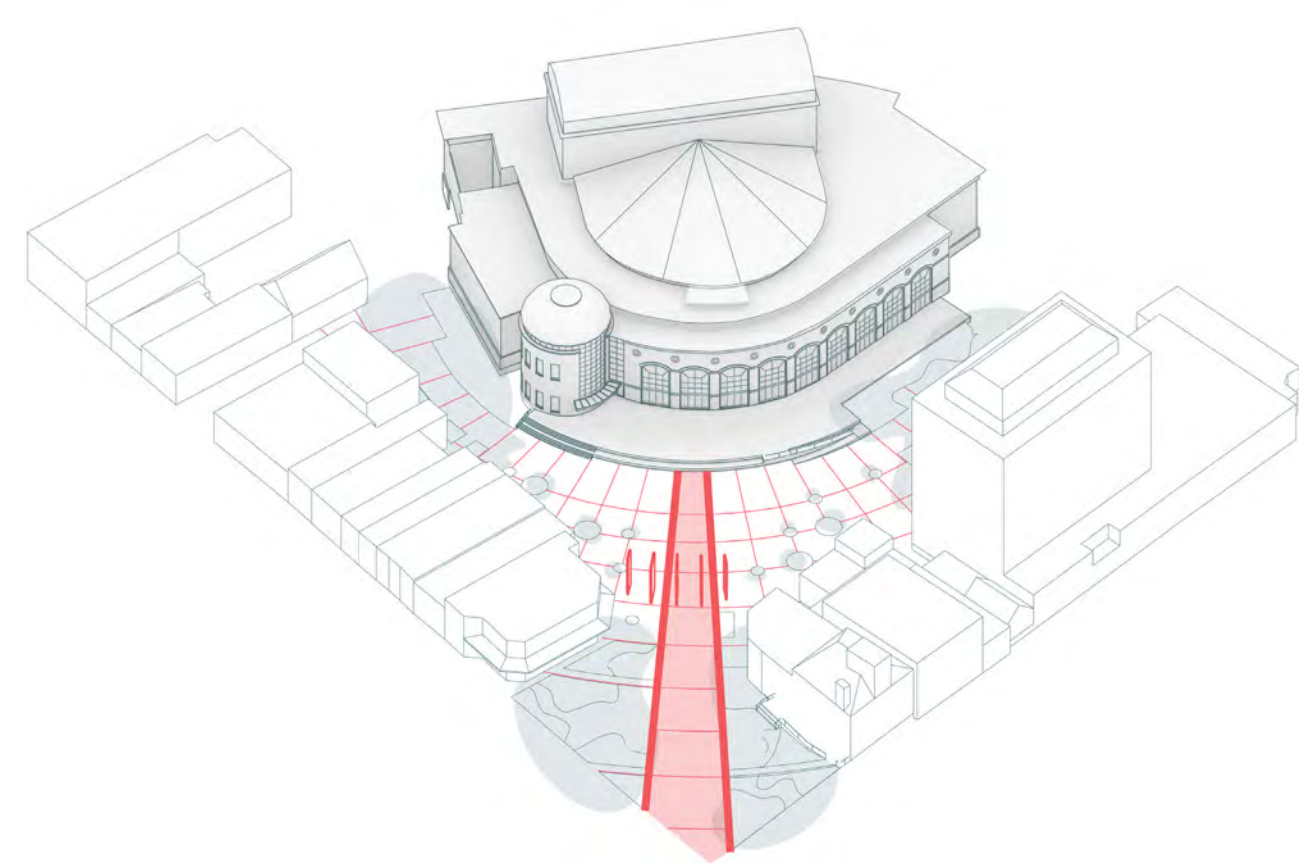
Concealing & revealing
The perforated aluminum cladding slides on tracks to reveal or conceal the media screen as required, for its seamless integrated into the public realm when required for the Square's programming.



The city's proscenium



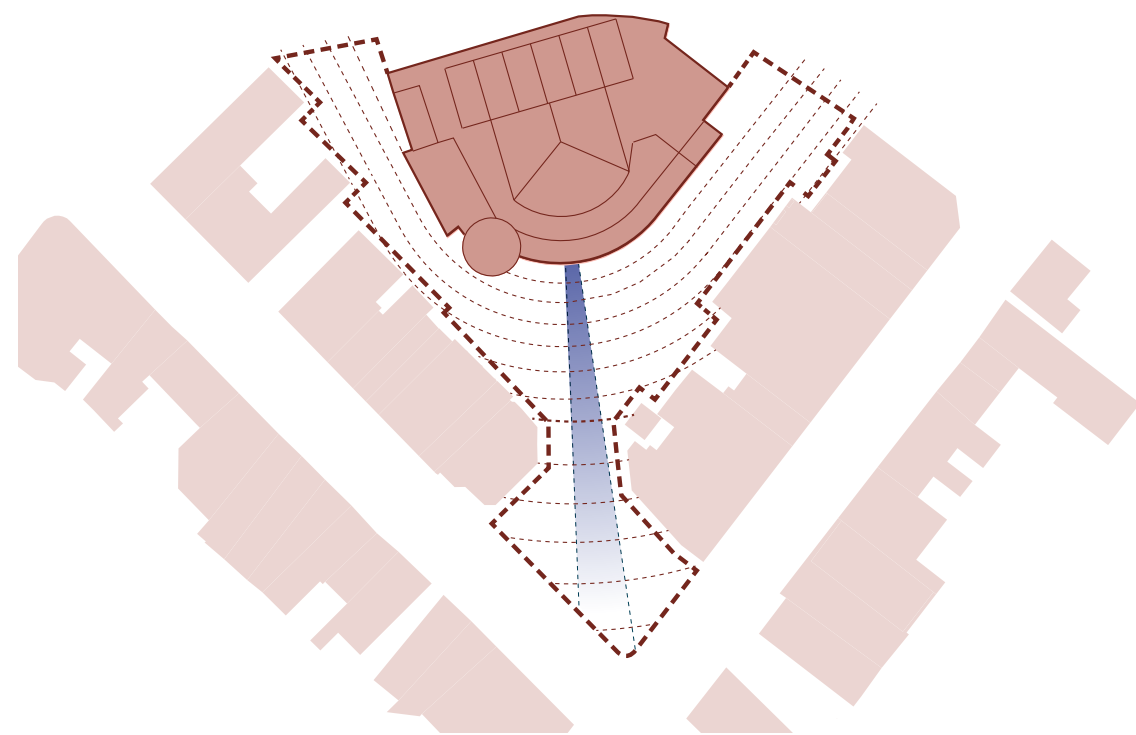
Garden Square



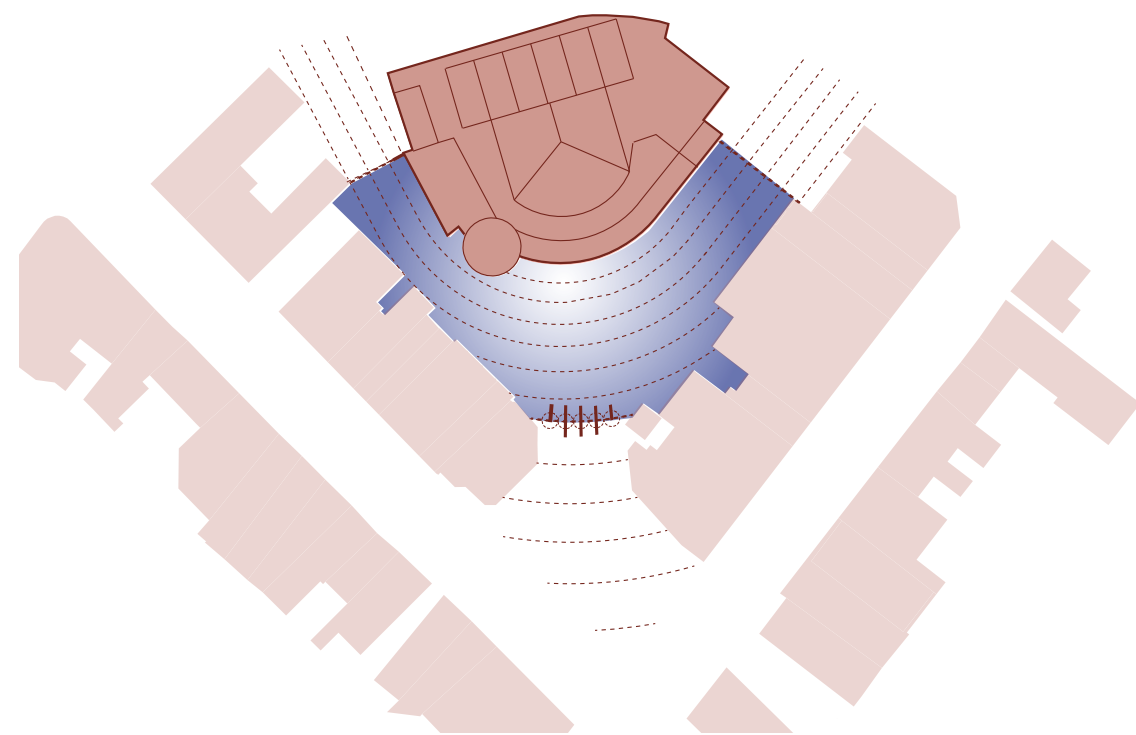
The City's Proscenium

The reimagined Garden Square wraps itself around the Rose Theatre. Its irregular form becomes its strength, allowing it to be divided into zones, each inspired by the spatial structure of a theatre. At the corner of Main and Queen Streets, the Flower Foyer opens as a small park in the heart of the City. With flowering trees and a blooming ground layer, it reflects Brampton's identity as the Flower City. This welcoming threshold – a soft lush forecourt – provides shade, rest, and retreat, while gently leading visitors toward the main gathering space. At the center lies the Main Stage, a flexible urban floor capable of hosting concerts, markets, public screenings, and performances. The surface is open and robust, designed to support large events and informal everyday use. Movable café furniture, solitary trees, and elegant parols offer shelter from wind, rain and sun. A grand staircase wraps the Theatre's facade, providing access and seating.

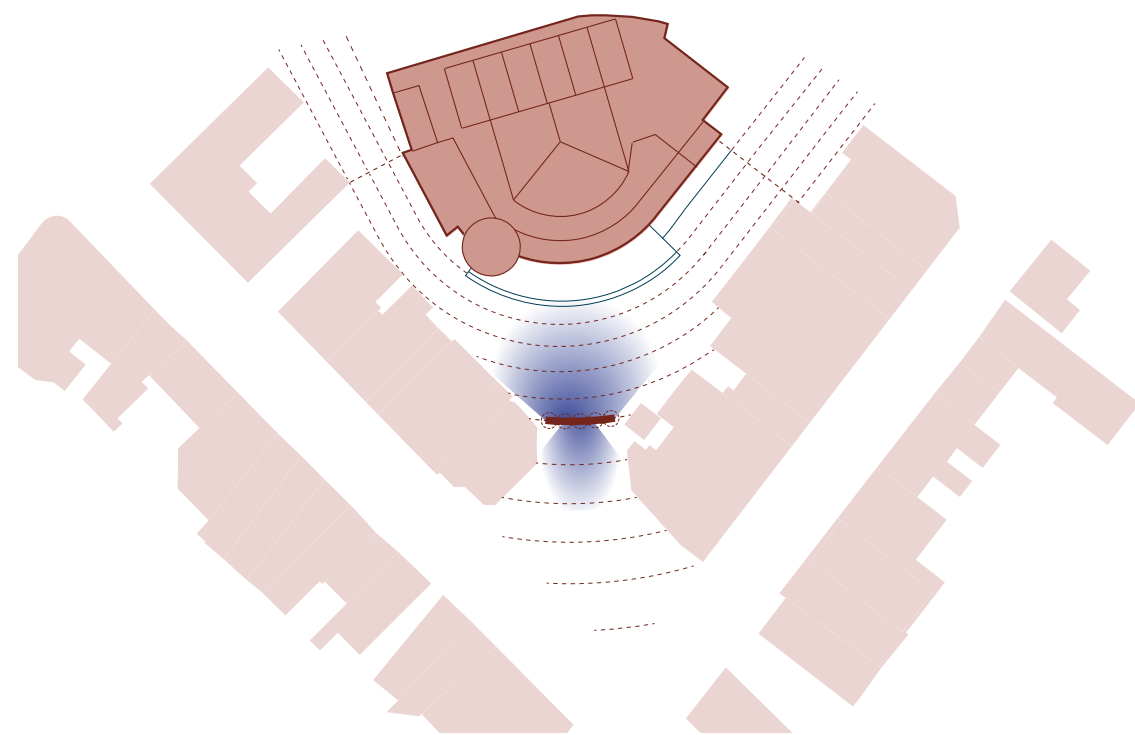
On either side of the Square, Green Wings frame the Main Stage, lushly planted areas with informal seating, shaded corners, and small social clearings. In the center of it all, the Scenic Threshold forms a striking urban backdrop. Composed of five rotating panels, this large public screen is both stage and gateway: when closed, it becomes a media surface for community celebrations, film, sports events, or performance. When opened, the elements pivot to frame a processional path from Main Street to the Theatre. When oriented toward the Flower Foyer, the screen plays to the City, creating moments of wonder in the colorful blooming landscape. Garden Square is not just a forecourt to the Rose Theatre, it is a living extension of the Theatre's architecture and ethos – a stage for everyday life and extraordinary moments alike. ethos. A stage for everyday life and extraordinary moments alike.



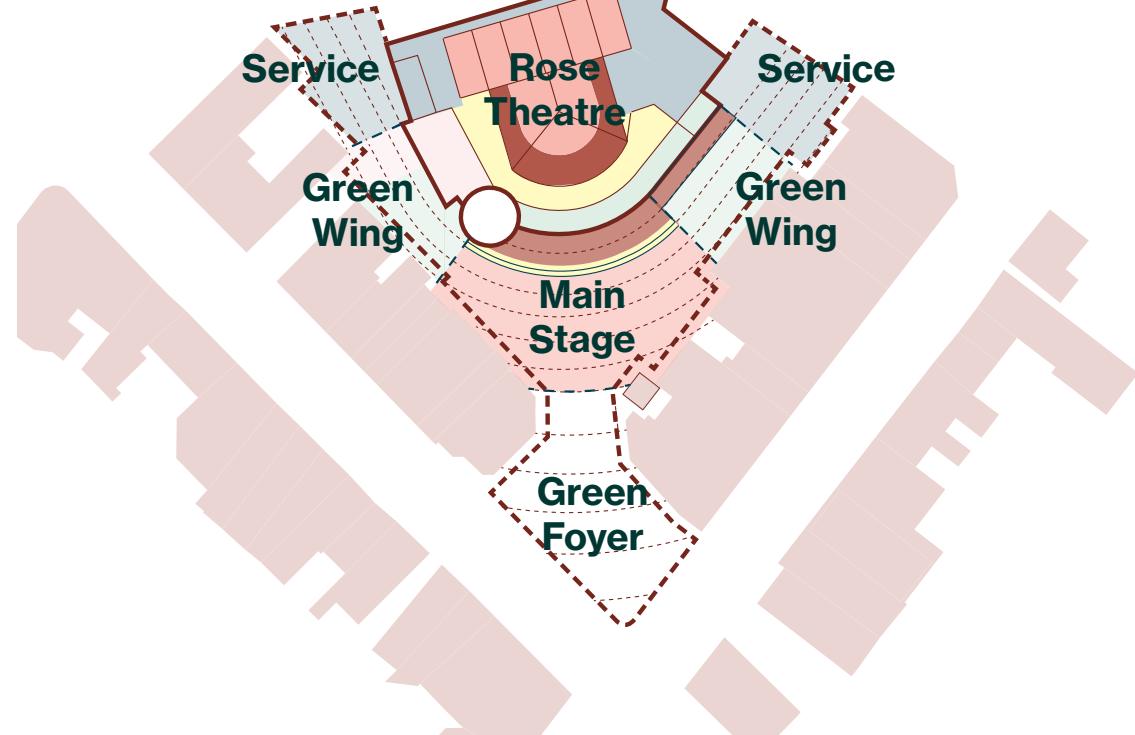
Enhance prominence of theatre
View towards the Theatre from Main and Queen Street is decluttered, framed and enhanced



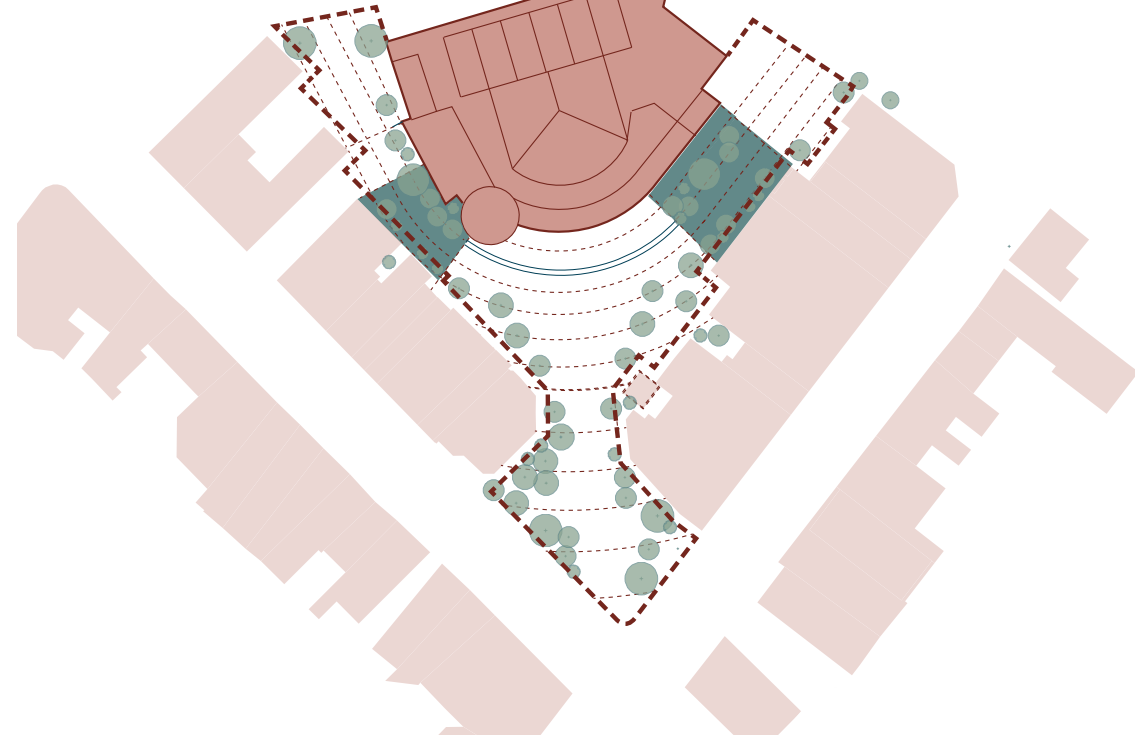
Frame the square
The panels frames the square defining a clear threshold and enhancing the inner intimacy



Threshold integrate big screen
Rotating panels towards Main and Queen Street are provides flexibility in use as the screen can be open, or a screening can happen in either directions.



Zones reflecting of theatre
The Square mirrors the life within the Theatre, unfolding into open spaces where culture spills outward—gatherings spark, performances breathe, and community weaves its rhythm beneath the sky

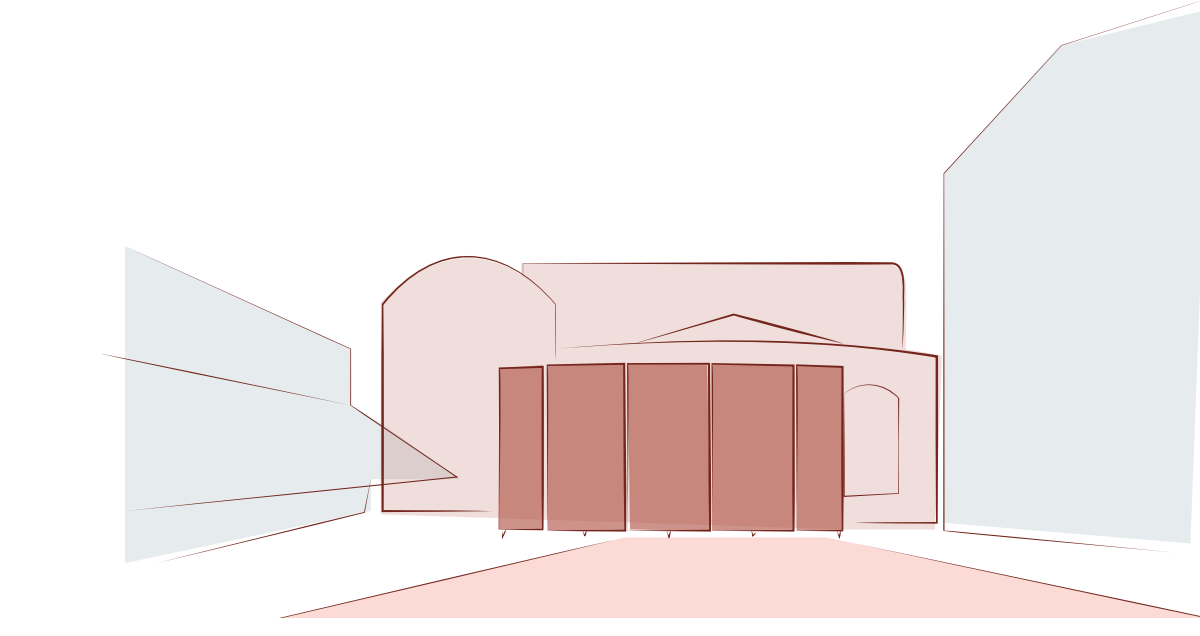


Green Wings
The Green Wing extends the theatre into a serene outdoor space, where seating beneath a soft tree canopy invites quiet reflection and gentle interaction. Dappled light and natural materials create a calming atmosphere in harmony with the theatre's contemplative spirit.





Garden Square



Catalogue of zones

1. The Flower Foyer

The Flower Foyer opens as a small park space towards the city. A soft, lush foreground that provides shade, rest, and retreat, framing the theatre and gently leading visitors toward the main gathering space.

2. The Main stage

Main Stage is a versatile space for concerts, markets, and daily life. Its durable paved surface supports large events, while movable café seating, trees and sleek parasols provide comfort in all weather. The space is transformable with supporting infrastructure, prepared for temporary stage with the Scenic Threshold as backdrop. The activity of the Theatre's ground floor spills out onto the square.

3. The re-tooled raised terrace

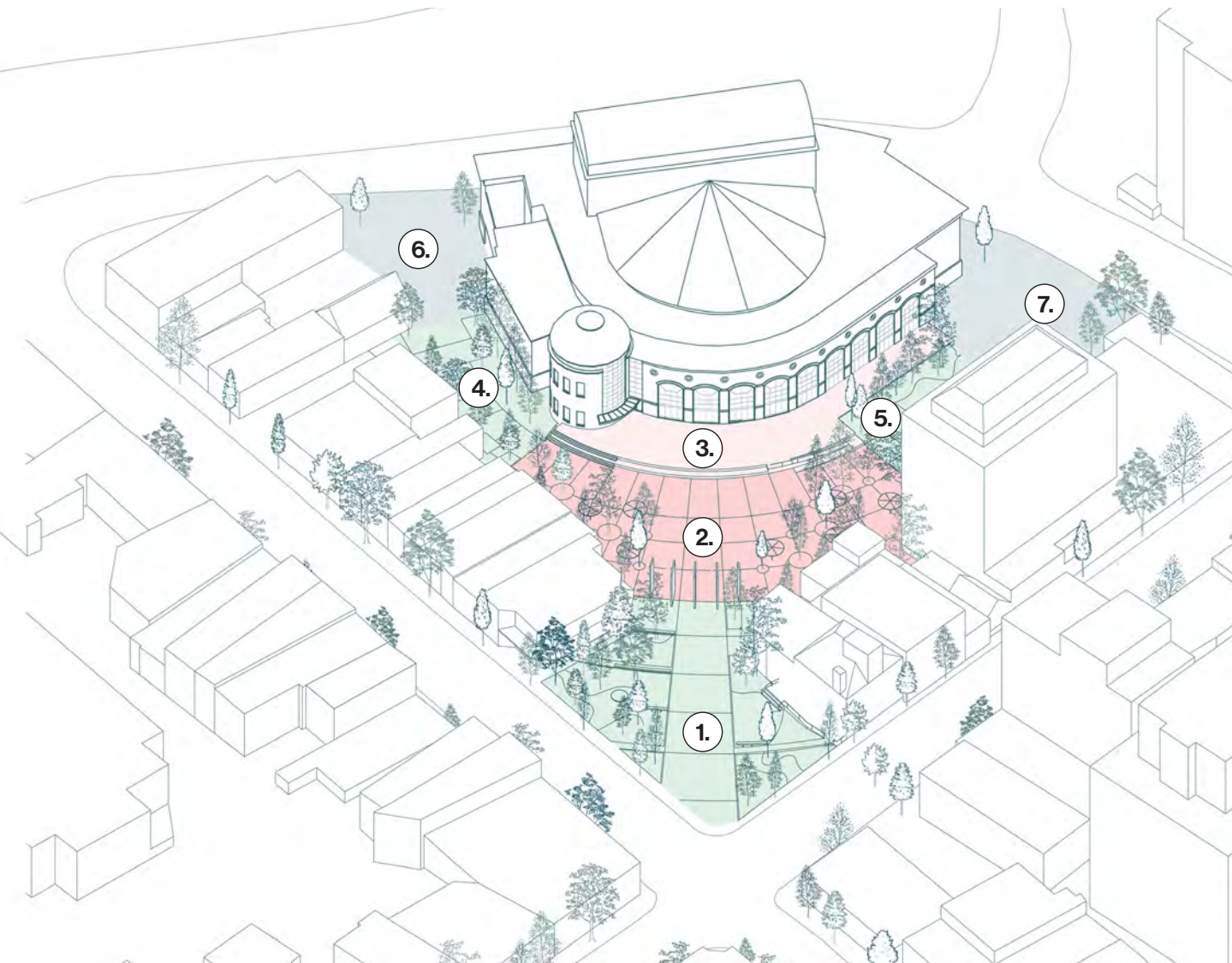
A grand granite staircase wraps the Theatre's facade, providing access and amphitheatre-style seating. Here the boundary between the Theatre's interior foyer and the Square merge..

4 & 5. Green wings and small stage

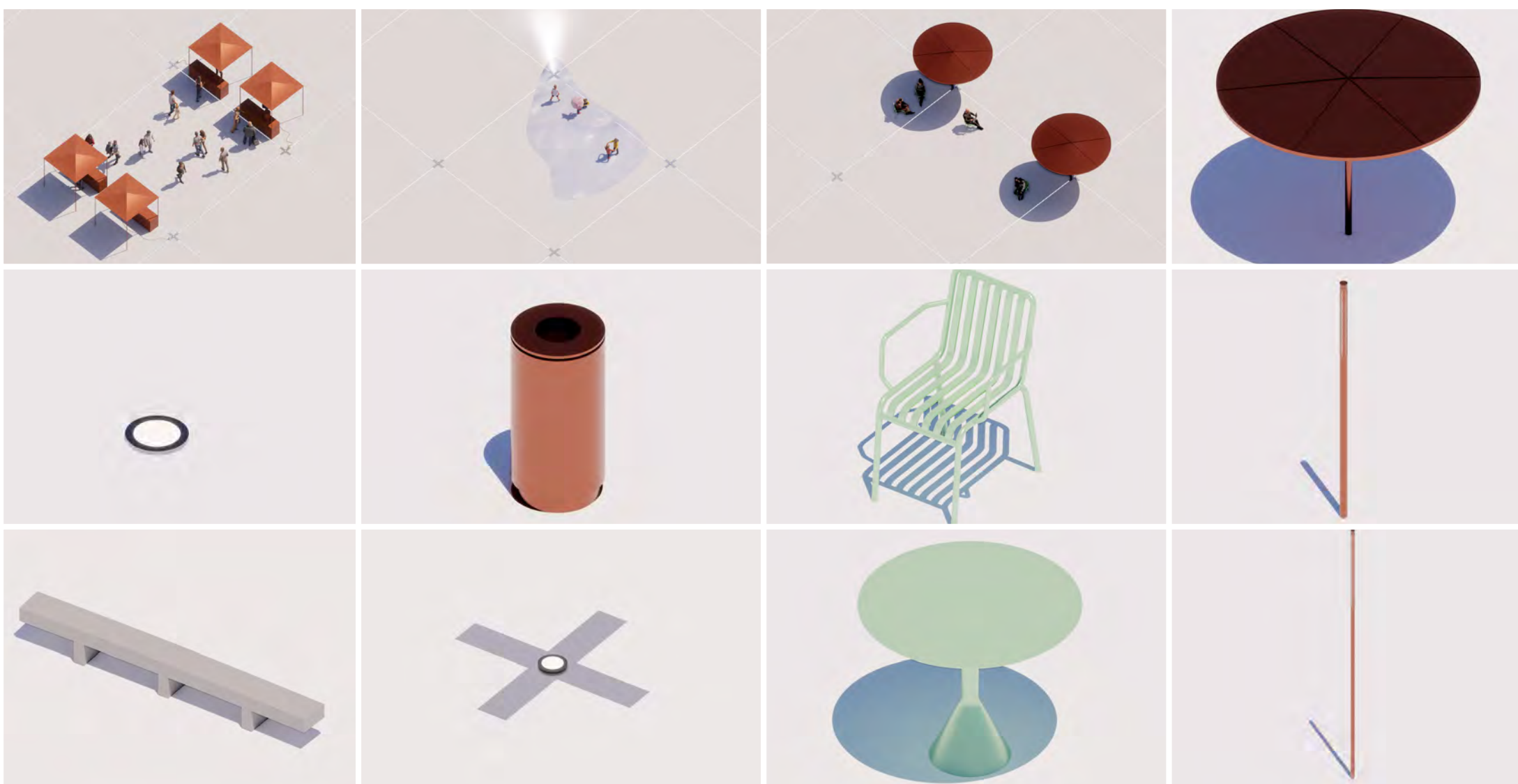
Vivian Lane is revitalized with a small stage set amid trees and vegetation, which frame both wings. Smaller and more intimate, they soften the connection to the service zones, and allow vehicle access the Square.

6 & 7. Backstage

The Theater Square's backstage remains the key service zone, allowing vehicle access when needed. Its character is elevated through the use of greenery and refined paving.



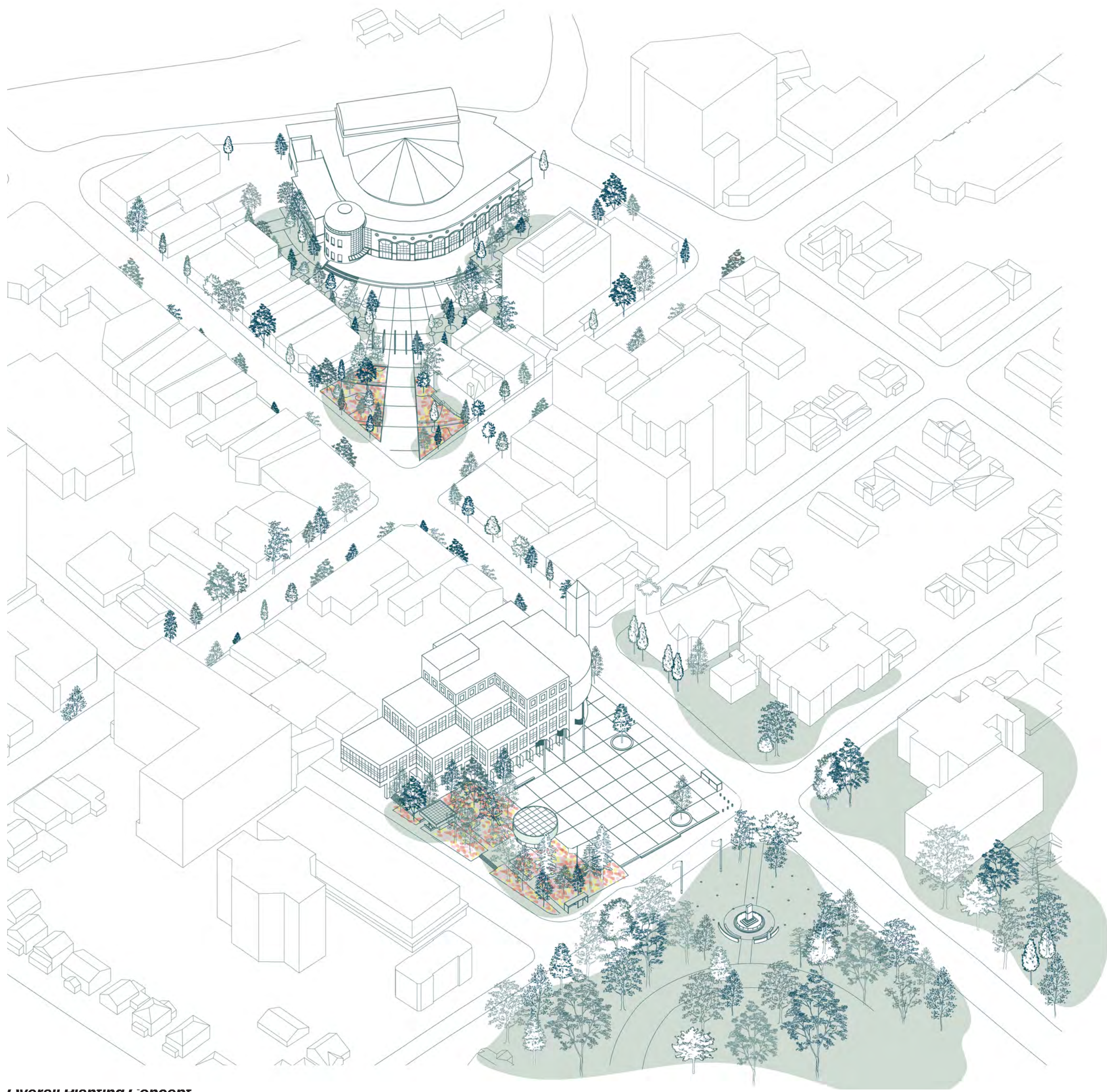
Elements of the new design



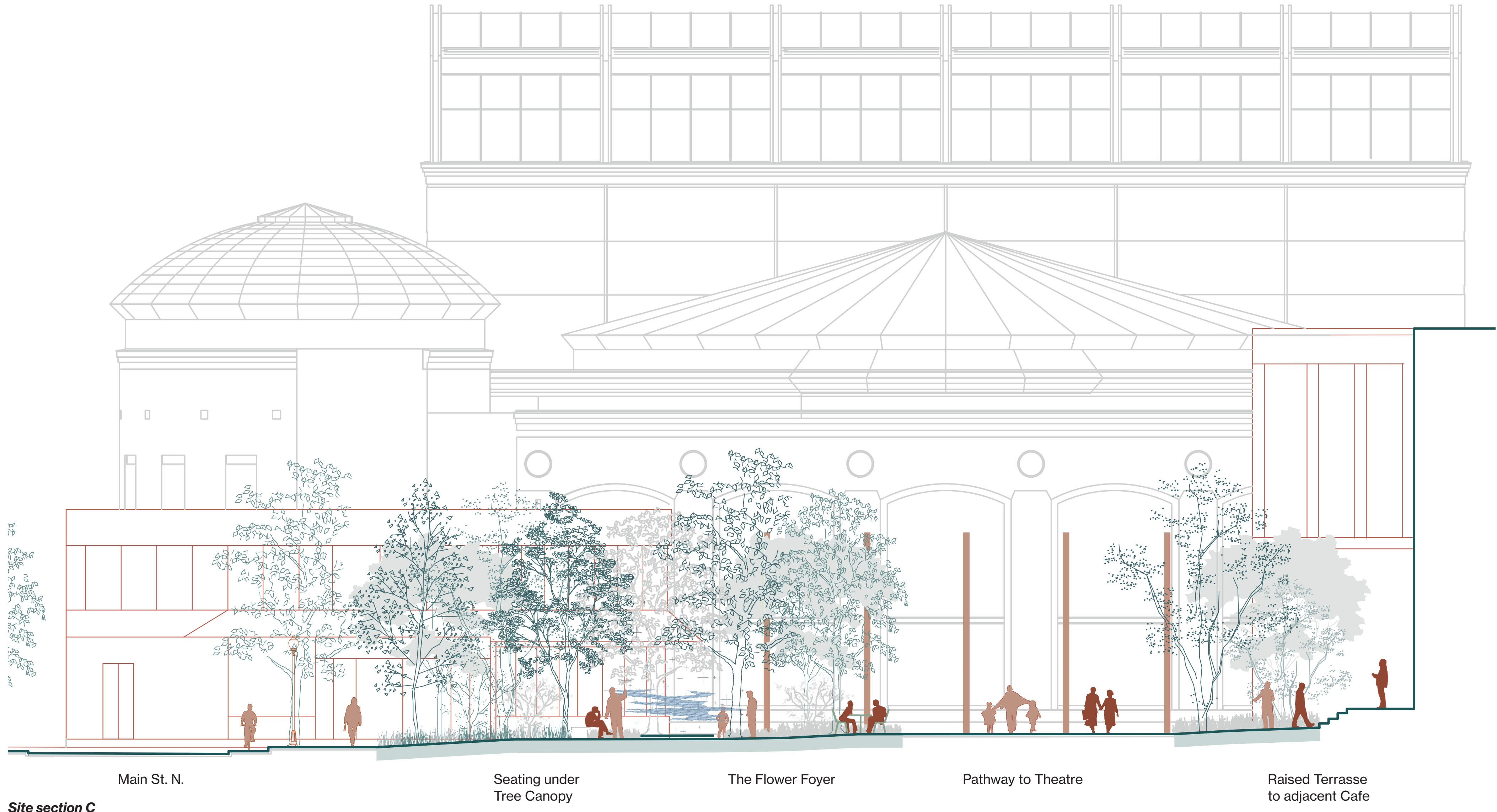
Catalogue of elements for both squares



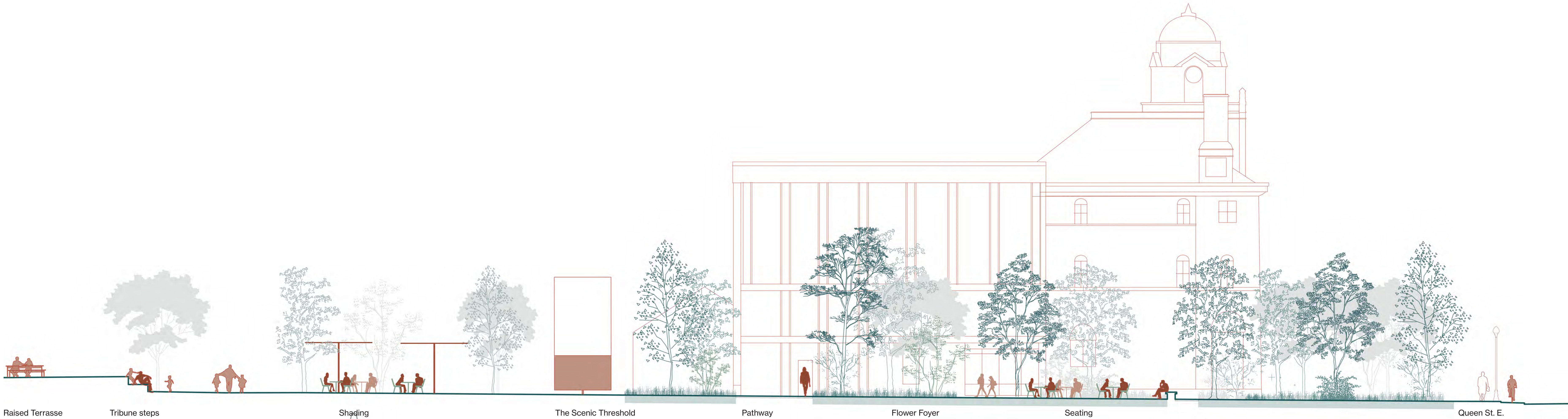
Bird's-eye view of Garden Square



Overall planting concept



Site section C

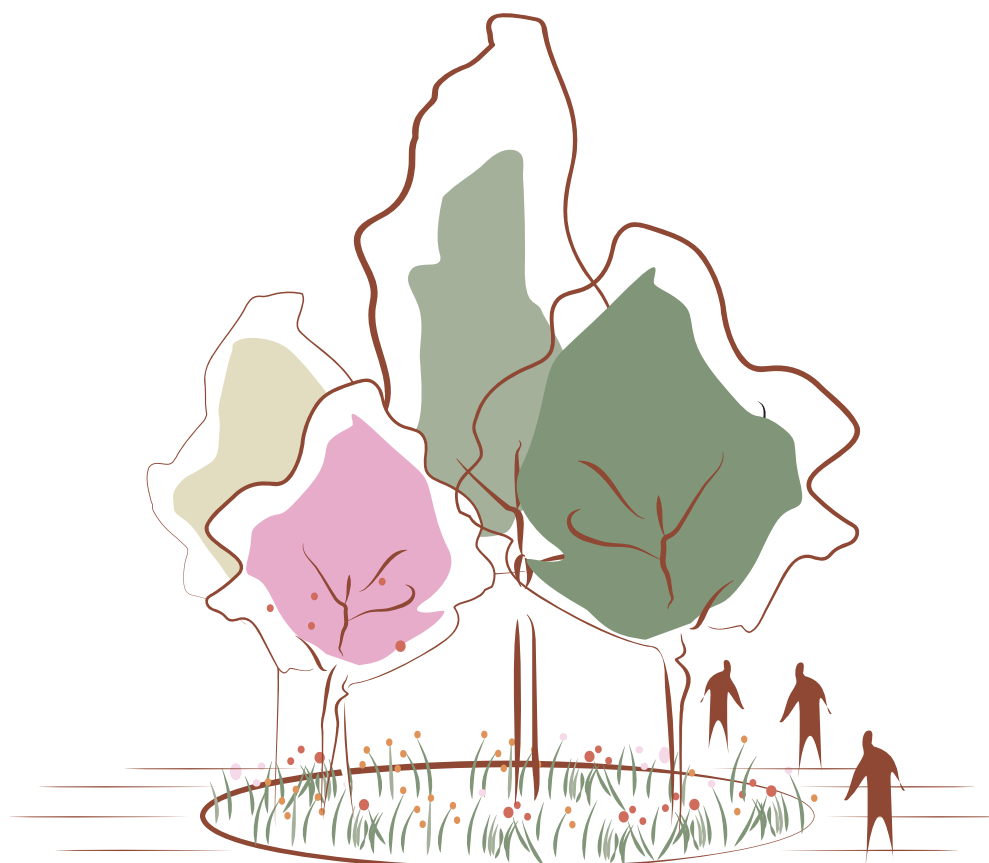


Site section D



Key Plan

Garden Square



Planting strategy for both squares

Reflecting Brampton's identity as Canada's "Flower City," the new designs celebrate its floriculture heritage through rich, abundant planting. City Hall Square features native wildflowers and pollinator-friendly species with subtle cultural accents, while Theatre Square emphasizes fragrant ornamentals and seasonal visual impact. All plantings are selected for long bloom periods, fall color, winter structure, and resilience in urban conditions.

Planting structures are designed to ensure open sightlines beneath tree canopies, enhancing safety and visibility. A diverse, flowering ground layer adds sensory and seasonal richness, while integrated pavement openings accommodate flowers and shading trees, blending

nature seamlessly into the urban fabric. At City Hall Square, plantings are concentrated in the western green belt, linking to Gage Park, PAMA, and the church to define a larger landscape setting. At Theatre Square, vegetation frames the theatre and creates sheltered pockets and niches that support a wide range of user experiences

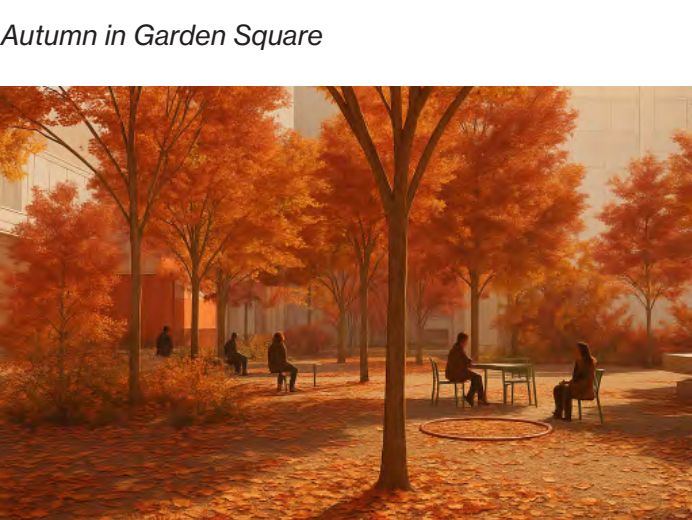
Intimate and lush
The Front yard of the Rose Theatre, offers a series of intimate spaces where people can gather, pause, or simply pass through. Framed by vegetation, nature is brought close to the user – blurring the line between built and natural, performance and presence. The Green Wings and lush Green Foyer create a welcoming embrace, rooting the theatre in a living landscape that reflects Brampton's identity as the Flower City.



Spring in Garden Square



Summer in Garden Square



Autumn in Garden Square



Winter in Garden Square

Garden Square throughout seasons



The Green Foyer



The Main Stage and meeting space

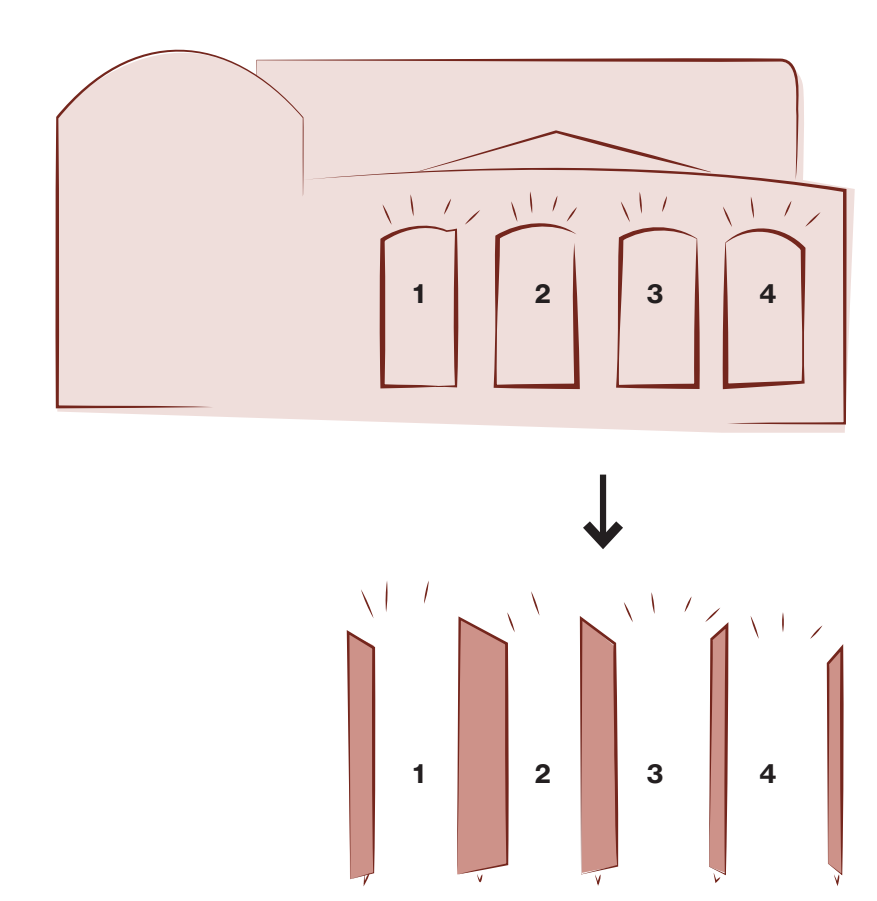


The Green Wings

The city as a stage



Garden Square



Framing the Rose Theater

The Scenic Threshold functions as both stage backdrop and gateway for Garden Square. Its rotating panels, made of corten steel and containing a media surface frame four generous openings between the Flower Foyer and the Main Stage zones of the Square. These openings correspond with four of the large-scaled windows in the Rose Theatre that are directly visible between the panels upon approach from Main and Queen Streets.

From threshold...
Following the radial organization of the Square, the rotating panels of the Scenic Threshold in their open position allow for the free flow of people through, and acts as a large urban gateway to Garden Square in dialogue with the Rose Theatre.

to filter...
The panels can partially rotate, to direct the flow of the visitors to one side or the other of the Square depending on the event or theatre performance. As the public filter through, they are greeted by moving images on the media screens.

... to backdrop
All panels can be fixed to align in a gentle arc to form a scenic backdrop of media that can be used for the display of events, films, performances and community gatherings at the Main Stage. It is then transformed into a freestanding element, allowing for flow around it.

