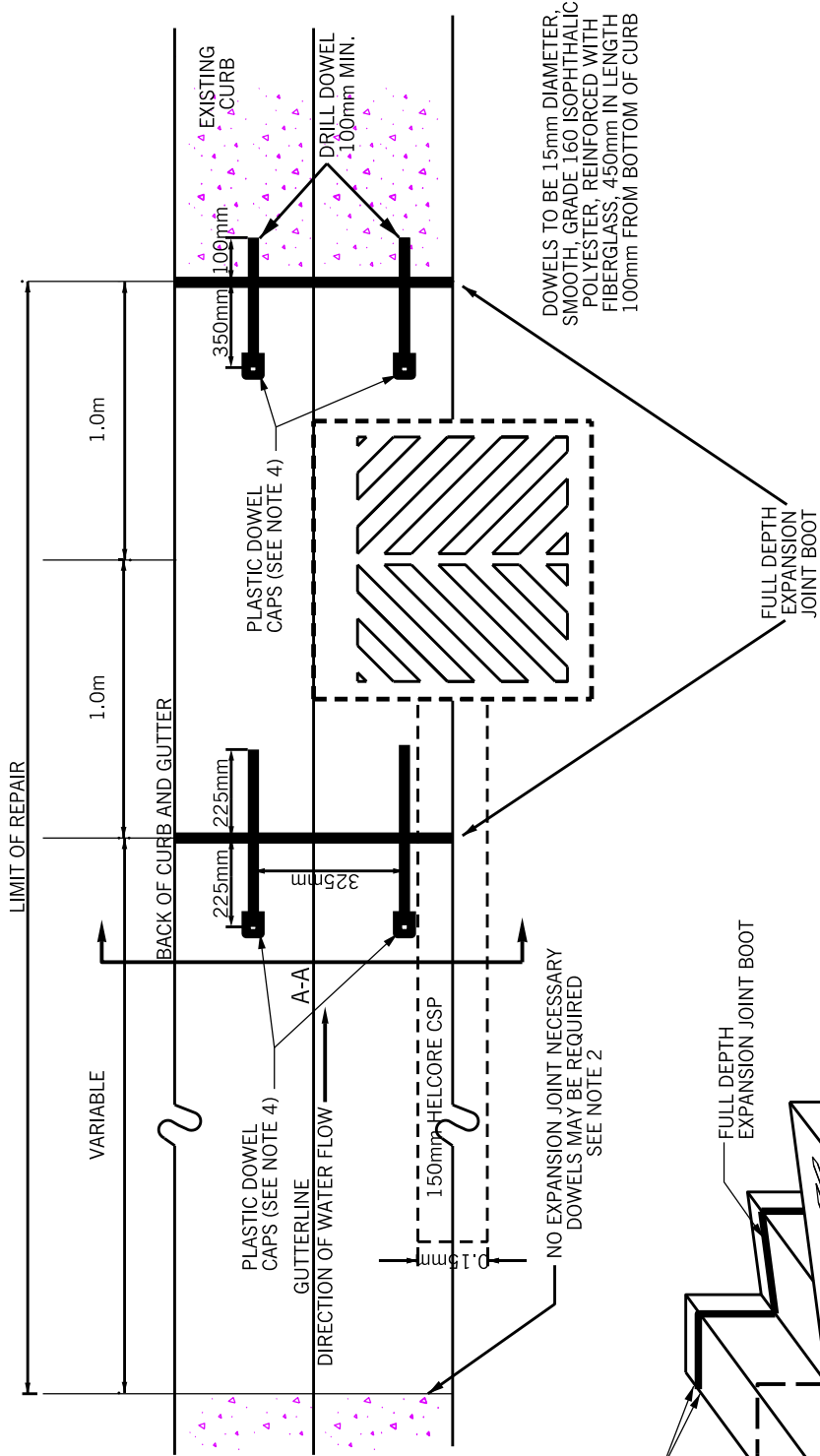
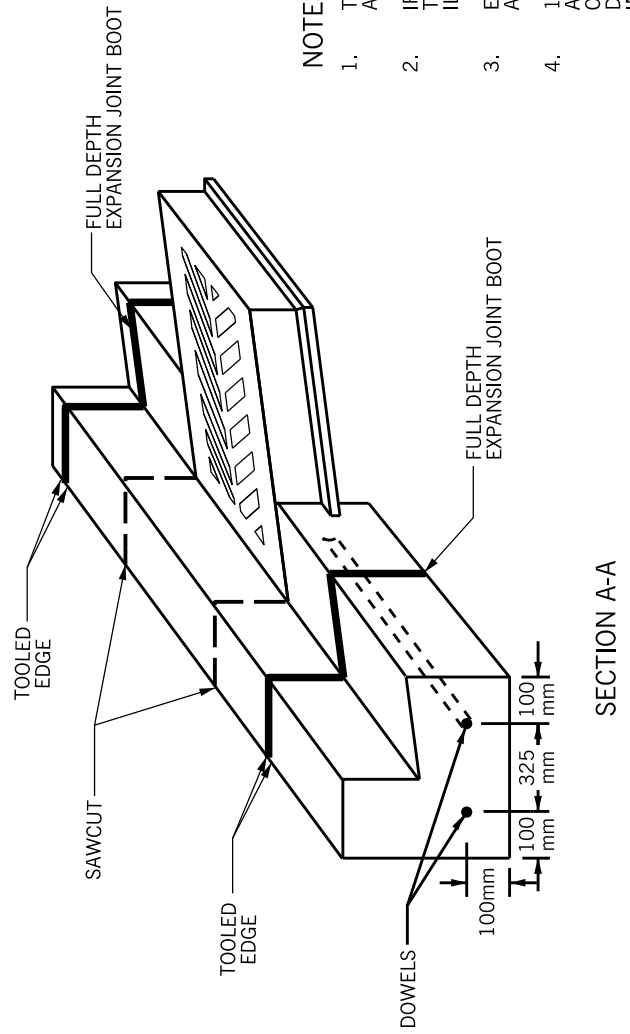


TYPICAL PLAN VIEW



DOWELS TO BE 15mm DIAMETER SMOOTH, GRADE 1.60 ISOPHTHALIC POLYESTER, REINFORCED WITH FIBERGLASS, 450mm IN LENGTH 100mm FROM BOTTOM OF CURB

FULL DEPTH EXPANSION JOINT BOOT



SECTION A-A

NOTES:

1. TOOLED EDGES TO BE CONSTRUCTED USING 50mm WIDE SIDEWALK EDGING TOOL AGAINST EXPANSION BOOTS AND THEN BROOM FINISHED.
2. IF DISTANCE FROM CENTERLINE OF CATCHBASIN TO EXISTING CURB IS EQUAL TO OR LESS THAN 6.0m, DOWELS MUST BE DRILLED IN THE EXISTING CURB AS ILLUSTRATED.
3. EXPANSION JOINTS AT CATCHBASINS TO BE CONSTRUCTED SUCH THAT THE CURB ABUTS SQUARELY AGAINST JOINT MATERIAL.
4. 100mm LONG, 19mm INSIDE DIAMETER PLASTIC DOWEL CAPS COMPLETE WITH A COMPRESSIBLE, NON-ABSORPTIVE, CLOSED CELL, POLYETHYLENE FOAM CAP INSERTED IN THE CLOSED END, SHALL BE INSTALLED ON ONE END OF EACH DOWEL TO ALLOW FOR HORIZONTAL THERMAL EXPANSION, ONCE ENCASED IN THE CONCRETE CURB.