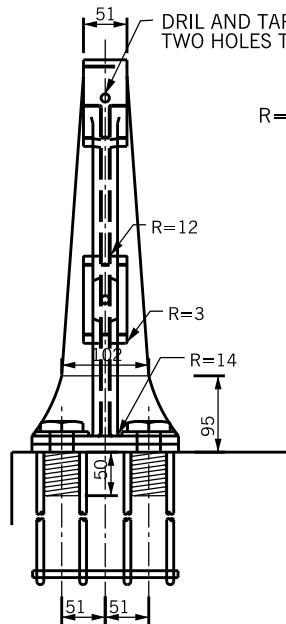
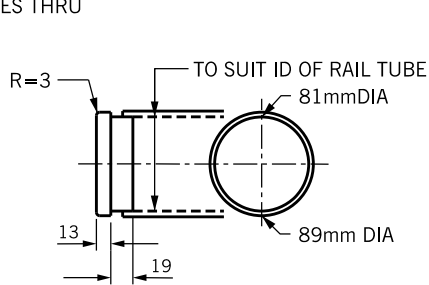


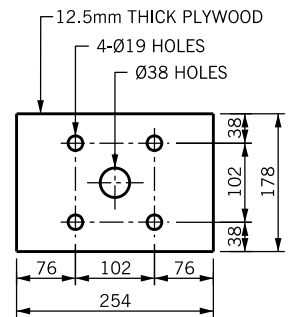
SIDE ELEVATION



FRONT ELEVATION

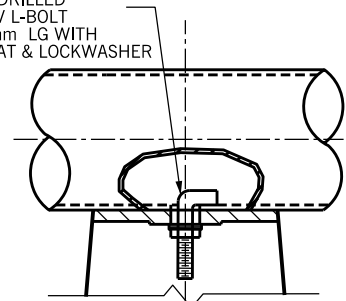


RAIL CAP

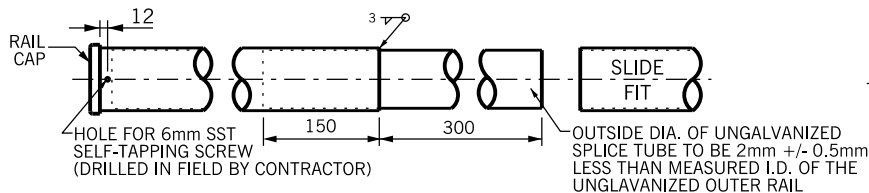


TEMPLATE

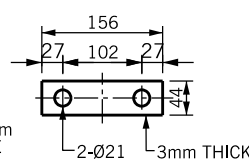
TUBE TO BE DRILLED TO SUIT GALV L-BOLT 12 DIA x 75mm LG WITH HEX NUT, FLAT & LOCKWASHER



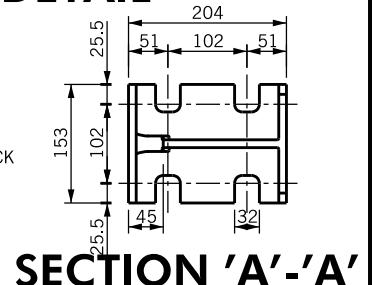
FASTENING STEEL TUBING TO POST DETAIL



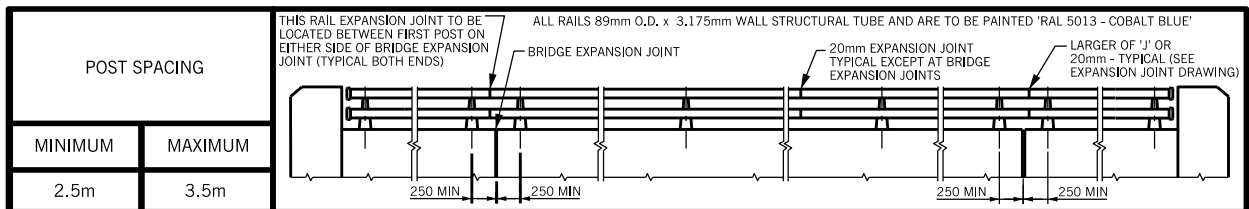
RAIL ASSEMBLY



WASHER DETAIL



SECTION 'A'-'A'



ELEVATION

NOTES:

- RAIL ELEMENTS SHALL BE STRUCTURAL TUBING SUPPLIED IN ACCORDANCE WITH CSA G40.21-04 GRADE 350.
- STEEL IN POSTS SHALL BE CAST STEEL SUPPLIED IN ACCORDANCE WITH ASTM A27-60 GRADE 65-35.
- RAIL SHALL BE SUPPLIED WITH SPLICE IN LENGTHS OF 6980mm (EXCLUDING SPLICE) EXCEPT AS NOTED.
- GALVANIZED ON MATING SURFACES OF TUBES TO HAVE UNIFORM THICKNESS NOT EXCEEDING 0.15mm TO ENSURE SLIDING FIT.
- POSTS AND RAILS SHALL BE GALVANIZED IN ACCORDANCE WITH CSA G164-M. ALL GALVANIZING SHALL BE DONE AFTER FABRICATION.
- ELECTRODES SHALL BE A LOW HYDROGEN SPECIFICATION E7015, E7016 OR E7018.
- POST AND ANCHORAGE TO INCLUDE ALL BOLTS AND WASHERS.
- END CAP TO INCLUDE SST SELF TAPPING FASTENERS.
- L-BOLT, NUT AND WASHERS FOR FASTENING STEEL TUBING TO POSTS SHALL BE GALVANIZED (CSA G164-M).
- RAIL TUBING SHALL BE PREBENT TO FOLLOW CURVATURE OF ROAD WHERE RADIUS IS LESS THAN 150m.
- RAIL POSTS SHALL BE SET PERPENDICULAR TO GRADE.
- WHERE LAYOUT OF POSTS IS NOT SHOWN, POST LOCATION SHALL BE DETERMINED BY THE CONTRACTOR.
- RAIL MAY BE CUT AS REQUIRED IN FIELD WITH PIPE CUTTERS. CUT TO BE SURFACE TREATED WITH ZINC RICH PAINT.
- WHEN CONNECTING TO EXISTING RAILING, RAIL MUST BE MADE CONTINUOUS AND POST SPACING DETERMINED WITH REFERENCE TO EXISTING POSTS.
- ALTERNATIVE ALUMINUM RAIL AND POST DESIGNS WILL BE PERMITTED. THE RAIL SHALL BE 6061 ALLOY T 6 HEAT TREATED. WHEN AN EXTRUDED POST IS USED, THE ALLOY AND HEAT TREATMENT SHALL BE THE SAME AS SPECIFIED FOR THE RAIL. WHEN A CAST POST IS USED THE ALLOY SHALL BE A 444.2-T4.
- LENGTH FOR 88.9mm OD PIPE WITH SPLICE GIVEN IN TABLE DOES NOT INCLUDE 300mm PROTRUSION OF SPLICE TUBE.
- SPLICING OF RAIL TUBES MAY BE DONE BY WELDING ON OF SPLICE PIECE OR BY SWEDGING OF RAIL END.
- RAILING ANCHORAGE INSERT TO BE PLACED PRIOR TO CONCRETING.
- THE COMBINATION OF STEEL RAIL AND ALUMINUM POSTS IS PERMITTED.
- ALL 'L' BOLTS SHALL BE INSTALLED AT THE MIDDLE OF THE SLOT AND SHALL BE TIGHTENED TO A CONDITION THAT WILL ALLOW RAIL MOVEMENT.

ALL DIMENSIONS IN mm UNLESS OTHERWISE NOTED



DOUBLE RAILING FOR BARRIER WALL

APPROVED:
2012/03/13

ORIGINAL:
1993/11/01

REV. 4

417

N.T.S