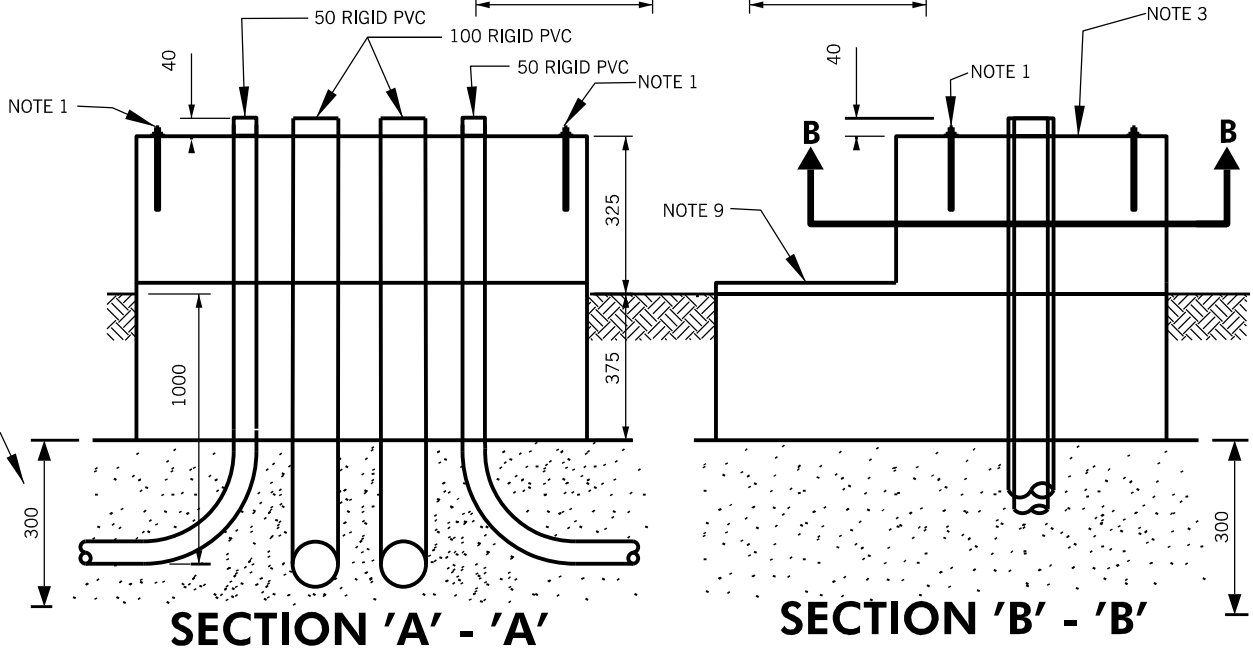
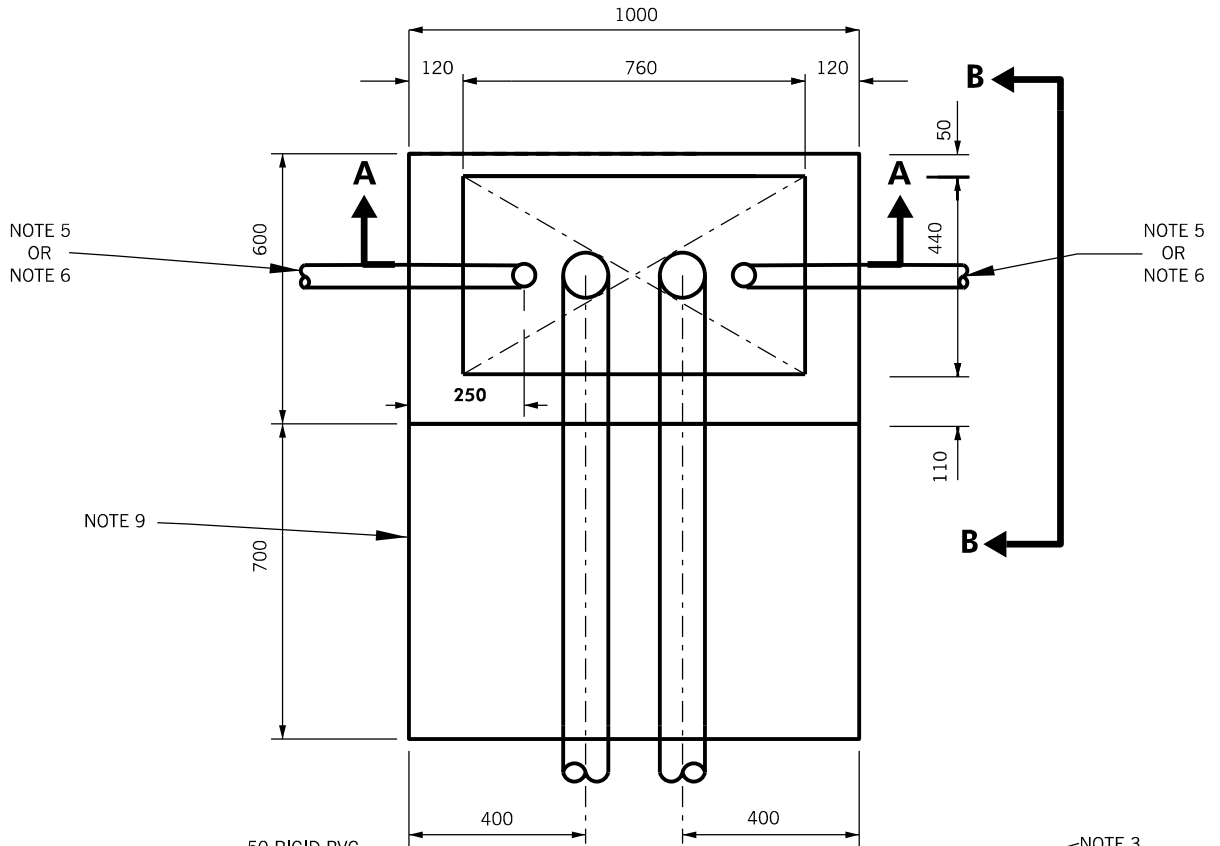


PLAN VIEW



NOTES:

1. ALL ANCHOR BOLTS 19mm x 450mm FOR CABINET TO BE FIELD DRILLED AND CONCRETE GROUTED TO SUIT CABINET DESIGN (4 REQUIRED). THE THREADS SHALL EXTEND NO LONGER THAN 25mm FROM THE NUT.
2. TWO (2) - 100mm RIGID P.V.C. WHICH WILL GO INTO AN ELECTRICAL CHAMBER UNLESS OTHERWISE NOTED IN THE CONTRACT DRAWINGS OR DIRECTED BY THE CONTRACT ADMINISTRATOR.
3. 35MPa CONCRETE, SEALED WHEN FULLY CURED WITH AN APPROVED SEALANT.
4. CONCRETE BASE SHALL BE TRULY LEVEL.
5. 50mm RIGID P.V.C. TO THE NEAREST ELECTRICAL CHAMBER FOR POWER SERVICE OR AS INDICATED IN THE LAYOUT DRAWINGS.
6. 50mm RIGID P.V.C. FOR FUTURE COMMUNICATION CABLE SHALL EXTEND 2m FROM THE CONTROLLER CABINET. THE CONDUIT SHALL BE TERMINATED BELOW EARTH GRADE OR BY THE NEAREST FINISHED EARTH BOULEVARD.
7. APPROVED CAPPING TO BE USED ON ALL UNUSED CONDUITS FOR FUTURE USE.
8. ALL RIGID P.V.C. CONDUIT SHALL MEET OR EXCEED CSA STANDARD C22.2 NO. 211.2
9. TOP OF THE CONCRETE STEP SHALL BE INSTALLED ADJACENT TO THE SIDEWALK AT THE SAME GRADE UNLESS OTHERWISE DIRECTED BY THE CONTRACT ADMINISTRATOR.
10. CONCRETE SHALL BE VIBRATED TO ELIMINATE HONEYCOMBING.
11. PLACE No. 10 ANNEALED FISH WIRE OR EQUAL STRENGTH POLYLINE THROUGH EACH CONDUIT.
12. THE DIRECTION OF THE CONDUIT SHALL BE IDENTIFIED ON THE BASE WITH AN "X".
13. ALL CONDUITS ENTERING THE CONTROLLER CABINET SHALL BE SEALED WITH STEEL WOOL AND ELECTRICAL DUCT SEAL PUTTY.
14. PLACE 300mm OF CRUSHED CLEAR STONE DRAIN (MAX 20mm) OR APPROVED EQUAL BELOW THE BASE FOR DRAINAGE.
15. CONCRETE SHALL BE CHLORIDE PENETRATION RESISTANT CLASS C-1 (MINIMUM) AS PER C.S.A. STANDARD A23.1.

ALL DIMENSIONS IN mm UNLESS OTHERWISE NOTED



BRAMPTON
Flower City

TRAFFIC SIGNALS
TYPE 'M' CONTROL CABINET BASE

TRAFFIC DETAILS - SERIES 400 ORIGINAL:
NOV. 1993

APPROVED:
APRIL 2014

REV. 5

431

N.T.S