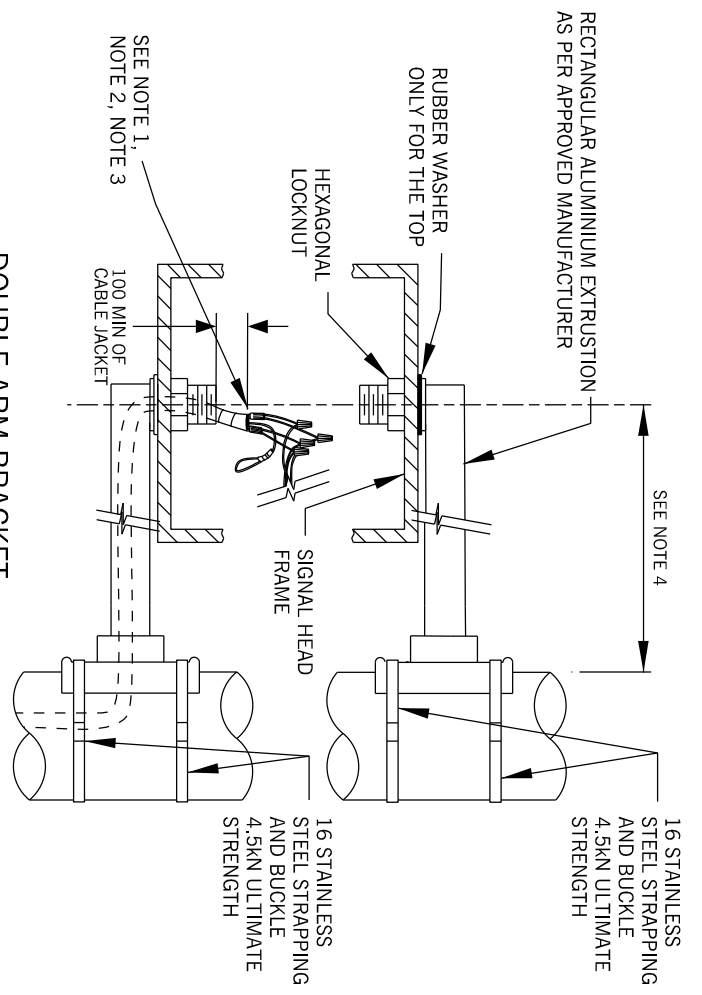


PLUMBIZER ATTACHMENT
SIDE VIEW



DOUBLE ARM BRACKET

NOTES

1. ALL WIRE CONNECTIONS SHALL BE MARRETTED WITH THE MARRETT'S ORIENTED UPWARDS AND GROUPED. MARRETT CONNECTIONS SHALL BE TAPED TOGETHER, INSULATING THE MARRETT CONNECTIONS SIMULATING A CABLE JACKET, TO REDUCE POTENTIAL MOISTURE DAMAGE TO THE CONNECTIONS.
2. CABLE JACKETS MUST BE STRIPPED TO AN APPROPRIATE LENGTH TO PROVIDE PROTECTION TO THE CONDUCTORS. CABLES SHALL HAVE ENOUGH SLACK WITHIN EACH HEAD FOR FUTURE MAINTENANCE. A MINIMUM OF 100mm OF THE CABLE JACKET SHALL LEAD FROM THE EQUIPMENT'S ENCLOSURE ENTRANCE INTO THE ENCLOSURE.
3. UNUSED CONDUCTORS SHALL BE LOOPED AND TAPED.
4. USE ARM ASSEMBLY EDA 500 OR AN APPROVED ALTERNATE.
5. WIRES SHALL GO IN BETWEEN THE AMBER AND RED SECTION OF THE TRAFFIC SIGNAL HEAD.

ALL DIMENSIONS IN mm UNLESS OTHERWISE NOTED



BRAMPTON
Flower City

APPROVED:
APRIL 2014

VEHICLE AND PEDESTRIAN
HEAD MOUNTING DETAILS

ORIGINAL:
TRAFFIC DETAILS - SERIES 400 APRIL 2014

REV. 1

439

N.T.S