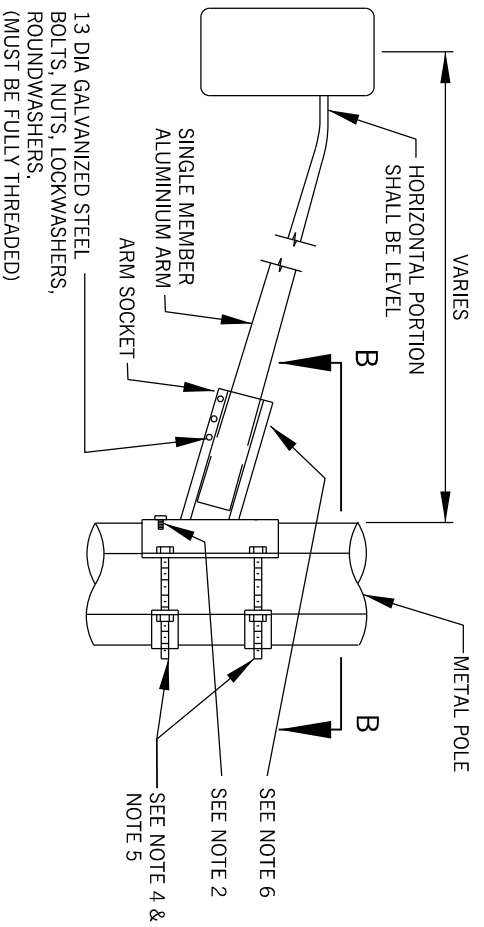
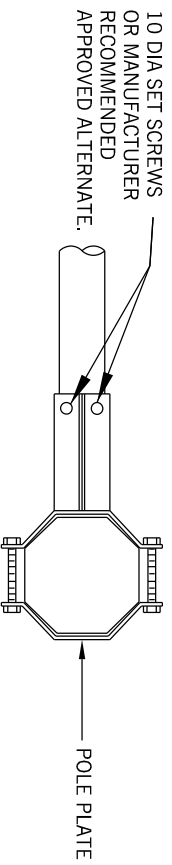


STEEL POLE ATTACHMENT (SEE NOTE 3)



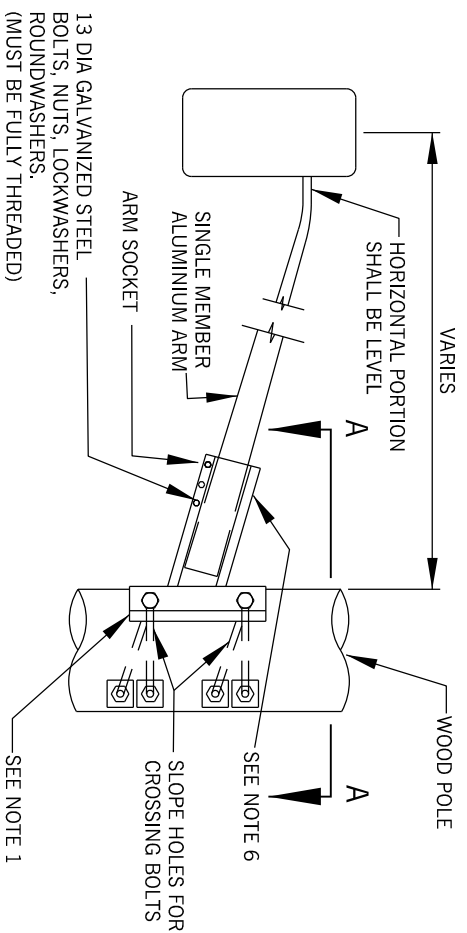
SECTION B-B



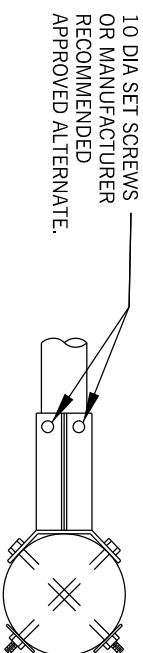
NOTES

1. A METAL REINFORCING PLATE AT THE POLE PLATE/POD WILL PREVENT THE POD FROM DIGGING INTO THE WOOD WHEN TIGHTENED. THE POLE PLATE BOLTS SHALL BE ADJUSTED SO THAT THE HORIZONTAL PORTION OF THE ARM IS LEVEL.
2. FOR ROUND METAL POLES THE POLE PLATE/POD SHALL BE PINNED TO THE POLE USING 9.5mm DIA SET SCREW OR MANUFACTURER RECOMMENDED APPROVED ALTERNATE SET SCREWS AND INSTALLED AS PER MANUFACTURER'S RECOMMENDATION TO REDUCE POTENTIAL TORQUE OF THE ARM AND ASSEMBLY AROUND THE POLE.
3. THE APPROPRIATE POLE PLATE/POD AND BOLTS SHALL BE USED, AS PER TYPE OF POLE, AND INSTALLED AS PER MANUFACTURER'S RECOMMENDATION OR AS OTHERWISE DIRECTED BY THE CONTRACT ADMINISTRATOR.
4. THE BOLT SHALL EXTEND 50mm (MAX) FROM THE LOCK WASHER AND NUT.
5. A 3m ARM OR SHORTER SHALL USE A 16mm BOLT. A 3.6m ARM OR LONGER SHALL USE A 19mm BOLT.

WOODEN POLE ATTACHMENT (SEE NOTE 3)



SECTION A-A



6. THE ARM SOCKET SHALL HAVE TWO (2) SET SCREWS AT THE TOP TO REDUCE POTENTIAL TORSIONAL MOVEMENTS OF THE ALUMINUM SINGLE MEMBER ARM. THE SET SCREWS SHALL BE AS PER MANUFACTURER'S (I.E. SECTION A-A OR SECTION B-B) RECOMMENDATIONS OR AS DIRECTED BY THE CONTRACT ADMINISTRATOR.

ALL DIMENSIONS ARE IN mm UNLESS OTHERWISE NOTED



BRAMPTON
Flower City

APPROVED:
APRIL 2014

TRAFFIC SIGNALS
ALUMINUM SINGLE MEMBER MAST
ARM ATTACHMENT DETAILS

ORIGINAL:
TRAFFIC DETAILS - SERIES 400 APRIL 2014

REV. 1

440

N.T.S