

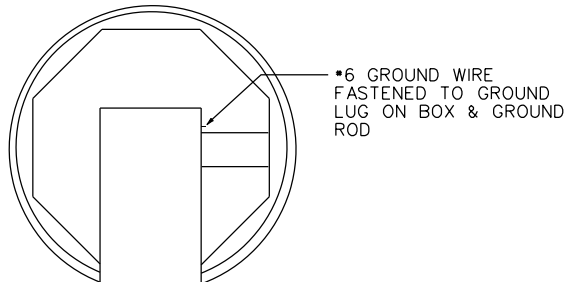
Protective Membrane
eg. half of a sono tube (24")
over cable and wire entrance
to prevent dirt and debris entering

POLE SPECIFICATIONS

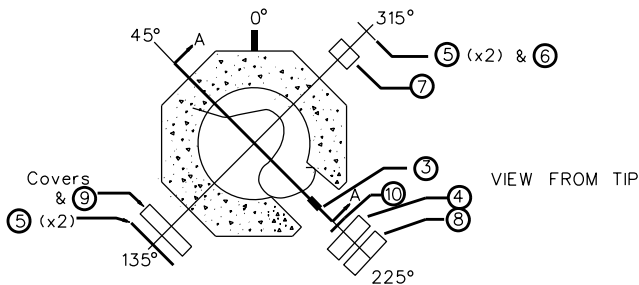
SHAPE: OCTAGONAL
 TOP: BALL
 INSTALLATION: DIRECT EMBEDMENT
 FINISH: ETCHED
 COLOUR: APPROVED BY CITY OF BRAMPTON - SALUKI BRONZE OR EQUIVALENT
 COATING: CAPPAR ACRYLIC OR APPROVED EQUIVALENT
 MINIMUM DIAMETER OF RACEWAY: 38.1mm
 AGGREGATE: FINE AGGREGATE (NATURAL SAND)
 COURSE AGGREGATE - NOMINAL SIZE = 14mm, CRUSHED PIGMENT AS REQUIRED

DESIGN COVE DETAIL AND FLUTING TO BE INCORPORATED AND APPROVED BY THE CITY OF BRAMPTON

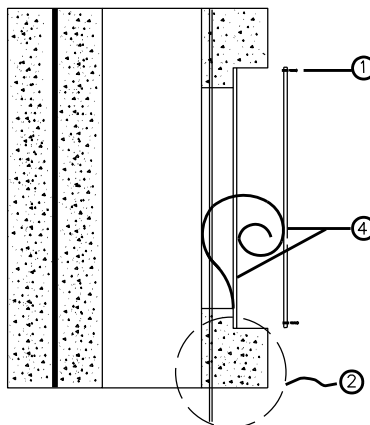
SECTION B-B



VIEW FROM TIP



SECTION A-A



NOTES:

1. Dimensions shown are in feet and inches (millimeters) from tip unless otherwise specified.
2. Poles constructed to CSA A14 (latest revision) for spun prestressed reinforced concrete poles.
3. Approximate Mass: 2000 kg

BILL OF MATERIALS	
I.D.	DESCRIPTION
1.	1/4" - 20 x 19mm TAMPER PROOF ALLEN KEY BUTTON PAN HEAD STAINLESS STEEL BOLTS C/W ANTI-SEIZE COMPOUND
2.	GROUNDED LEAD - NO. 6 AWG STRANDED COPPER WIRE CONNECTED TO HANDHOLE BOX AND GROUND ROD. LEAD TO BE EXTENDED 300mm OUTSIDE HANDHOLE.
3.	EMBEDDED GROUNDING CONNECTOR ATTACHED TO GROUND ROD WITH NO. 6 AWG STRANDED COPPER WIRE.
4.	STAINLESS STEEL HANDHOLE BOX 14mm x 368mm C/W BREAKER MOUNTS & ALUMINUM COVER (BRONZE)
5.	19MM DIAMETER FORMED THROUGH HOLES
6.	16MM DIAMETER INSERT.
7.	38mm x 76mm WIRING APERTURE.
8.	102mm x 267mm WIRING APERTURE
9.	CABLE AND WIRE ENTRANCE OPENING.
10.	MANUFACTURERS IDENTIFICATION PLATE c/w CSA INSIGNIA
11.	INSERT IN CAP



BRAMPTON
Flower City

COMMUNICATION
STREET LIGHT POLE
9.8m (32.5FT) CLASS B

SPECIFICATIONS

STREET LIGHT DETAILS - 500

APPROVED:
MARCH
2017

ORIGINAL:
JUNE 2006

REV. 2

520

N.T.S