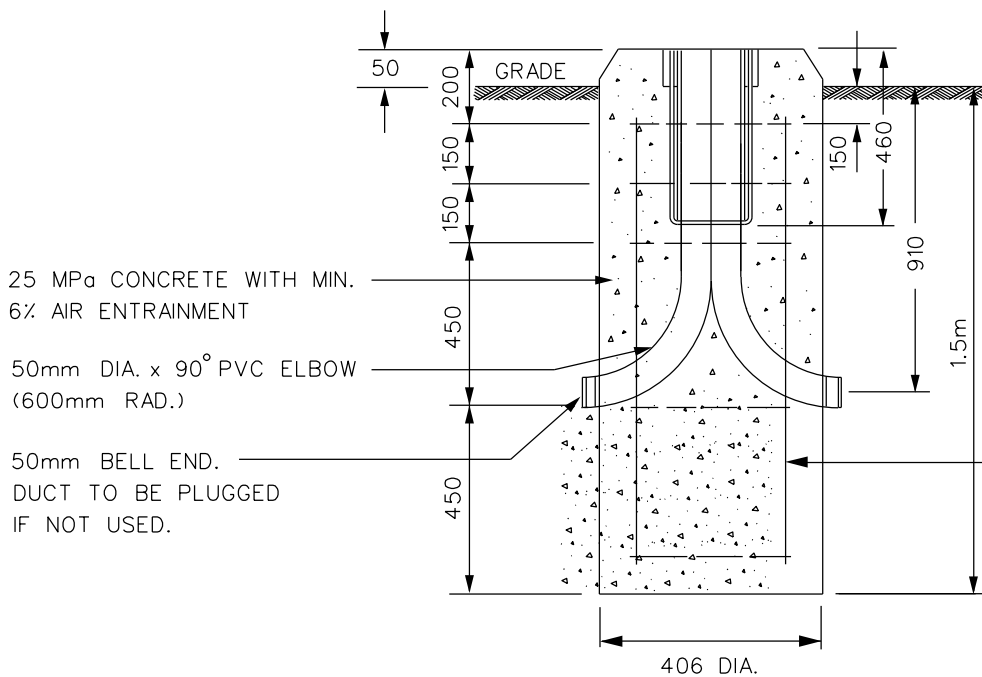
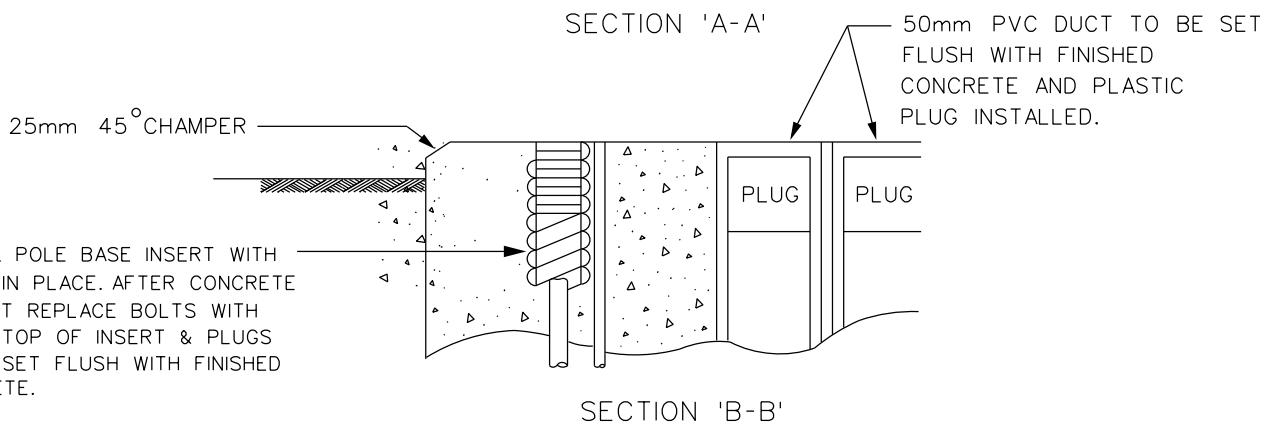


NOTES:

1. FORM BASE WITH SONO TUBE FLUSH WITH FINAL GRADE.
2. SONO TUBE TO BE PEELED OFF 150mm FROM TOP AFTER CONCRETE HARDENS.
3. TOP OF FOUNDATION TO BE LEVEL AND SMOOTH.
4. REFER TO STREET LIGHT POLE INSTALLATION STANDARD 545



SECTION 'A-A'



FOR MAINTENANCE ONLY



BRAMPTON
Flower City

INSTALLATION OF CONCRETE BASE AND POLE ANCHOR

FOR ORNAMENTAL STANDARD
STREET LIGHT DETAILS - 500

APPROVED:
APRIL 2014

ORIGINAL:
JUNE 2006

REV. 0

547

N.T.S