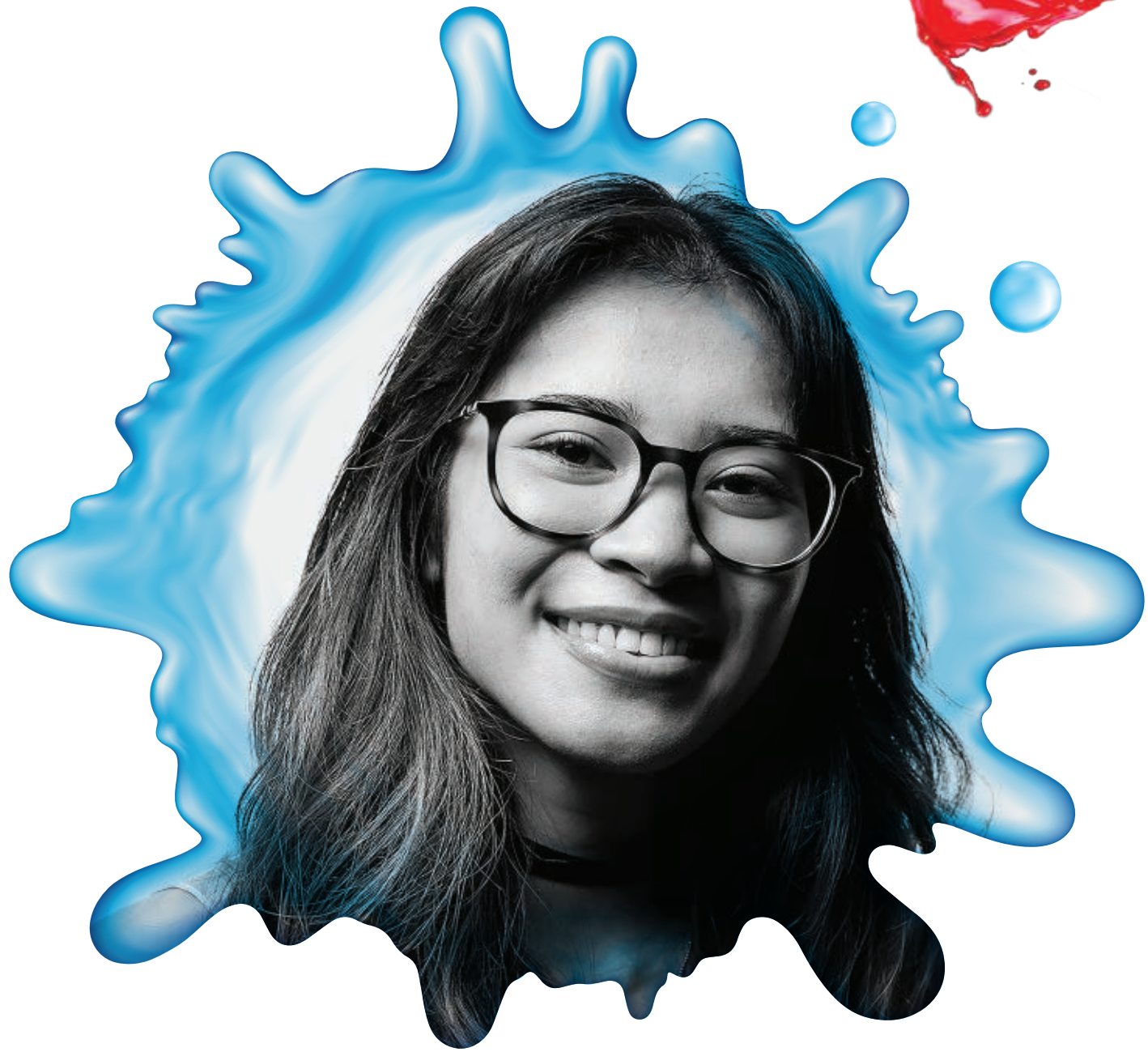




MEET THE ARTIST



PAULA NER DORMIENDO

Meet Paula Ner Dormiendo (she/her), one of the six artists painting 12 catch basin murals around Brampton! Paula Ner Dormiendo is an emerging multidisciplinary artist with the aim of championing diverse voices and meaningful stories that evoke positive change in her communities.

Using the slogan “All Drains Lead to Rivers/Ponds” and the depiction of a winding river and a still pond, I wanted to show the direct impact of waste that reaches Brampton’s wetlands and rich biodiversity through the city’s catch basins. Having spent a great deal of my childhood taking long walks with my family along the Etobicoke creek, “My River/Pond Home” pays tribute to the vibrancy, wonder and importance of experiencing those natural environments as a child. I hope it continues to engender a greater connection to nature among future generations as they make their own memories.

www.paulanerdormiendo.com

📷 @paulanerdormiendo

ALL DRAINS LEAD TO PONDS

@ HERRINGBONE CRES

Yellow fishes enjoy a swim in the calm waters of a bright blue pond while two Leopard Frogs join them. Surrounding the vibrant wildlife, moss, grasses and rocks decorate the edges of the pond.



MY RIVER HOME

@ ELMGROVE AVE

A mossy catch basin connects to a lively river that stretches into the distance, home to the rich plant and wildlife native to Brampton, in my mural, My River/Pond Home. Bright and colorful flowers adorn the grass beds surrounding the water while vibrant fauna like the Redside Dace and Leopard Frogs swim with the current.

