



SNAP AND ECO PARK PROJECT

Bramalea Sustainable Neighbourhood Action Program (SNAP) & Eastbourne Park Eco Space Project

Eastbourne Park Open House

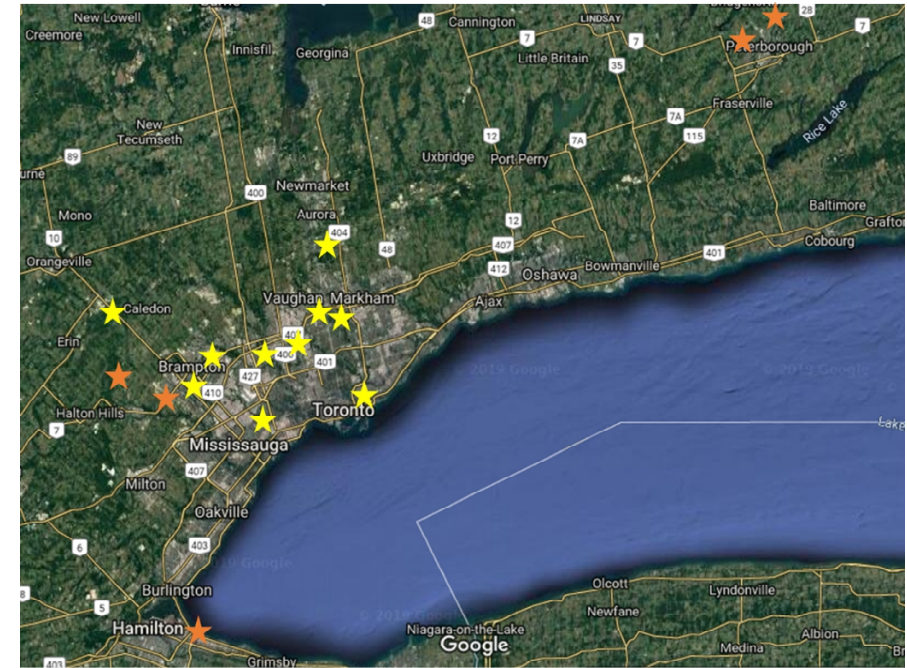
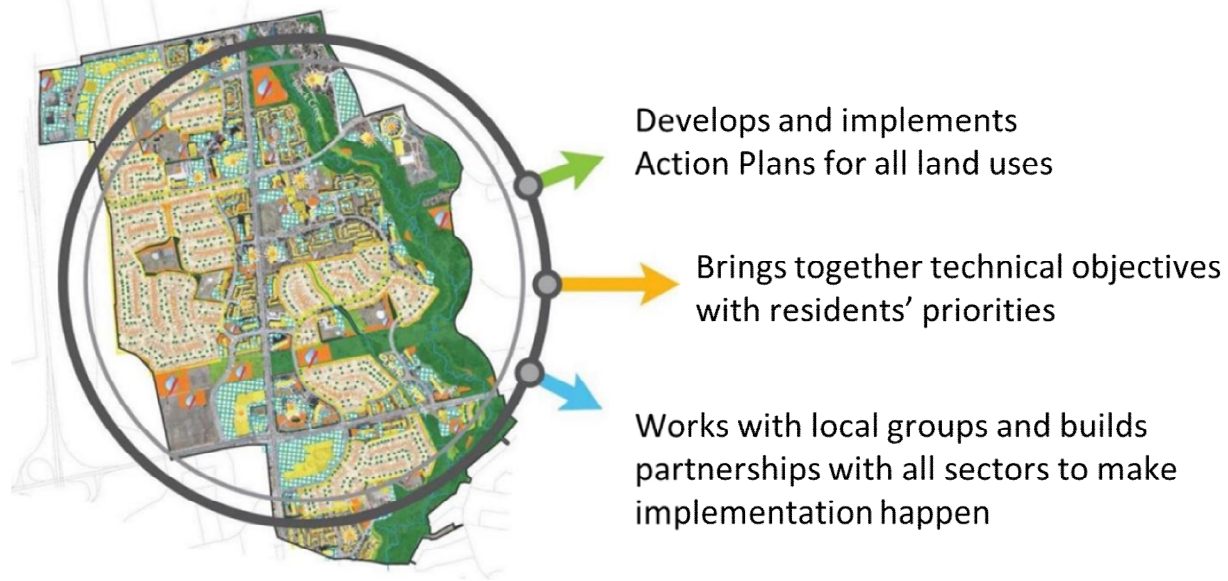
2022-10-26

BRAMALEA SNAP NEIGHBOURHOOD



Sustainable Neighbourhood Action Program (SNAP)

A neighbourhood-based solution for sustainable urban renewal and climate action.



BRAMALEA SNAP NEIGHBOURHOOD



Bramalea SNAP Action Plan

“Working together for a green, healthy, and welcoming Bramalea SNAP.”

1. System of Eco Spaces and Green Infrastructure
2. Safe and Active Transportation Network
3. Healthy Local Food System
4. Home & Building Efficiency and Resilience
5. Institutional & Commercial Collaboration and Greening
6. Community Resilience



<https://trca.ca/snap-bramalea>

BRAMALEA SNAP NEIGHBOURHOOD



System of Eco Spaces and Green Infrastructure: Phase 1 Eastbourne Park

- Eastbourne Park Eco Space (followed by Earnscliffe and Fallingdale Parks in coming years)



Fallingdale Park



Earnscliffe Park



Eastbourne Park

BRAMALEA SNAP NEIGHBOURHOOD

Brampton Eco Park Strategy

Brampton Eco Park → a connected network of sustainable urban/green spaces (Eco Spaces) that better integrate residents with the natural environment.

Seven guiding principles:

1. Maximize ecological value
2. Provide opportunities for social services
3. Making nature visible
4. Design with nature
5. Integrate with surrounding community
6. Support innovation
7. Reflect local identity

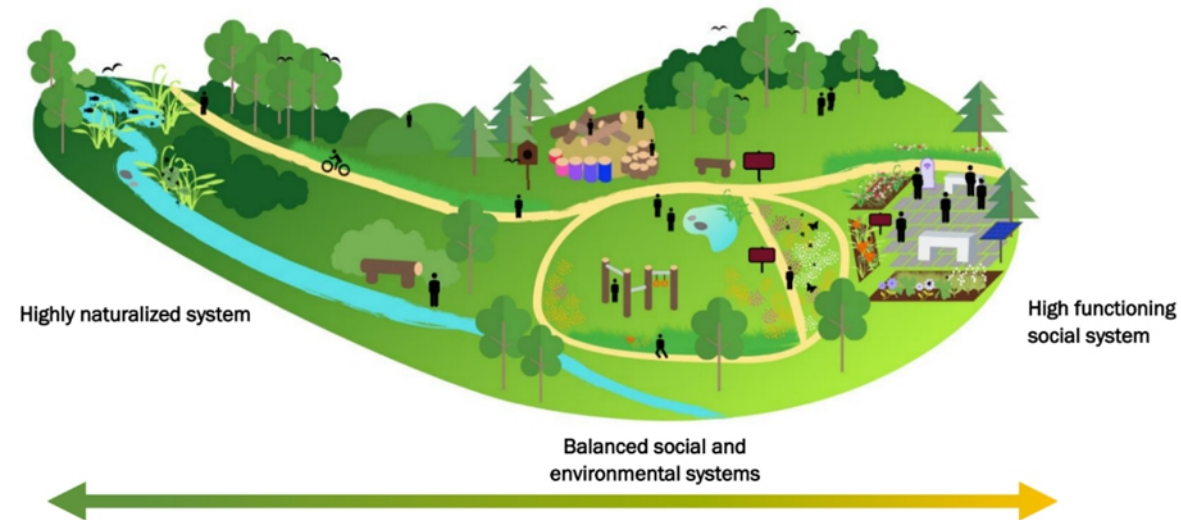


www.brampton.ca/ecopark

Brampton Eco Park Strategy: Eco Spaces

Eco Space → strengthens coexistence of people and the environment by:

- enhancing & maintaining healthy natural systems & processes
- integrating opportunities for meaningful social & environmental interactions/experiences
- striving to incorporate the seven guiding Eco Park principles



Eastbourne Park Eco Space

Locally Inspired Objectives for Eco Spaces:

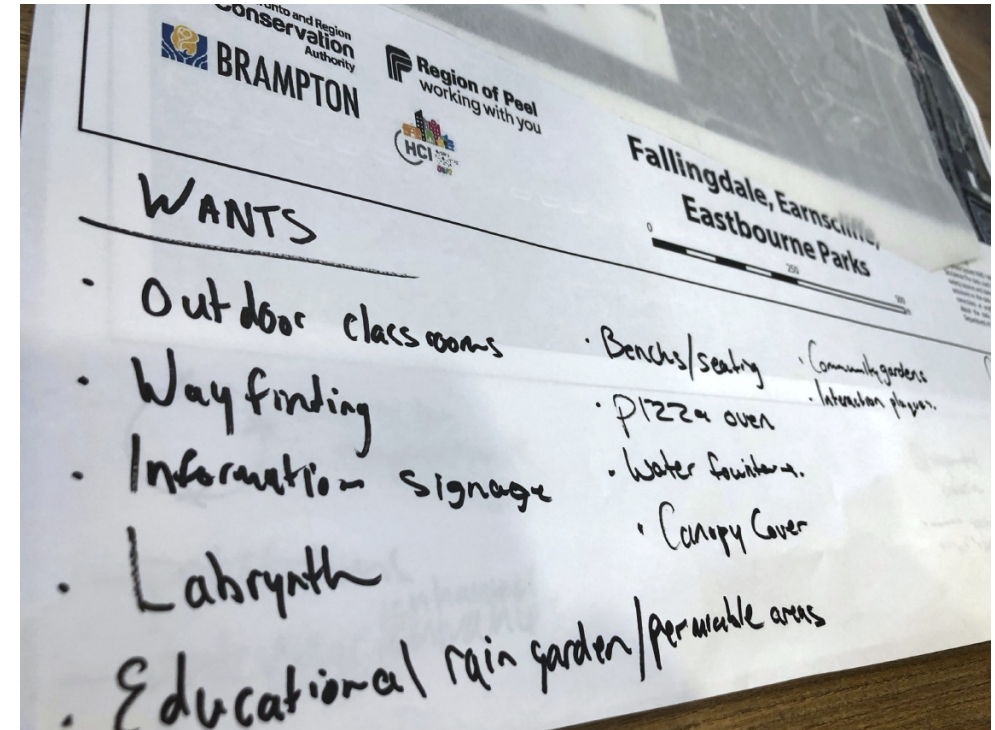
- Create safe, clean, welcoming spaces
- Support thriving natural systems
- Support healthy active living, for all ages, year round
- Be engaging, attractive, and a draw for residents
- Showcase local assets and unique history
- Be climate friendly, resilient, minimize GHGs
- Support community through local employment and skills training, and community-based projects



Eastbourne Park Eco Space

Key Eco Space Retrofits:

- Restoration of Mimico Creek (removal of degraded concrete-lined channel and re-naturalization of the creek/floodplain)
- Stormwater management improvements
- Playground retrofits (nature-based play)
- Community, pollinator & medicine gardens
- Gathering spaces, seating areas
- Trail/pathway improvements
- Trees



Eastbourne Park Eco Space

Eastbourne Park Eco Space Concept Plan: Illustrates the proposed channel re-naturalization work as well as other proposed park enhancements and amenity improvements.



Thank you!